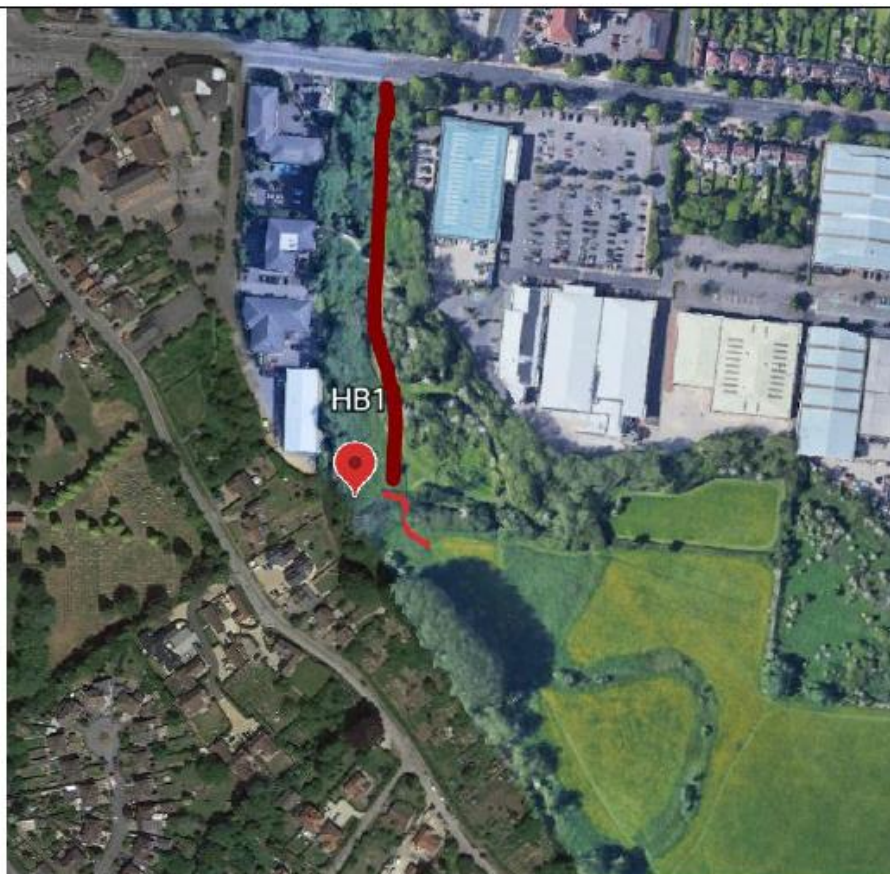


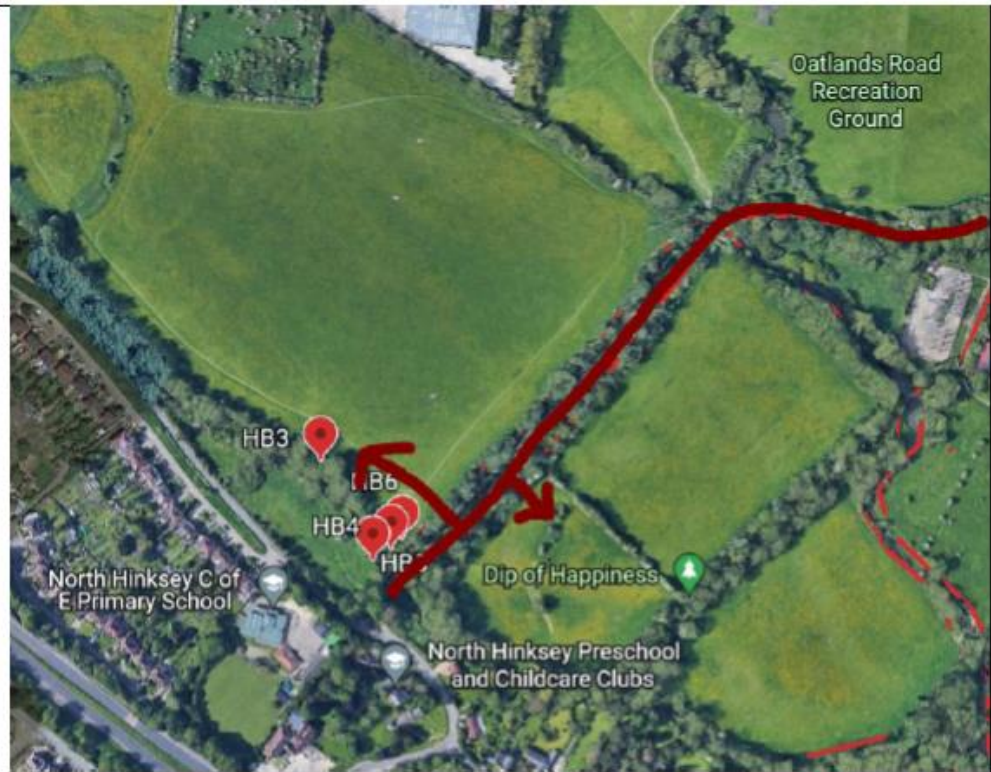
**OXFORD FLOOD ALLEVIATION SCHEME**  
**INDICATIVE ACCESS TO TREAT INVASIVE SPECIES**

Details and permissions to be confirmed once contractor is appointed.

Location of  
Invasive Species



Location of  
Invasive  
Species



Location of  
Invasive  
Species





Location of  
Invasive  
Species



Location of  
Invasive Species

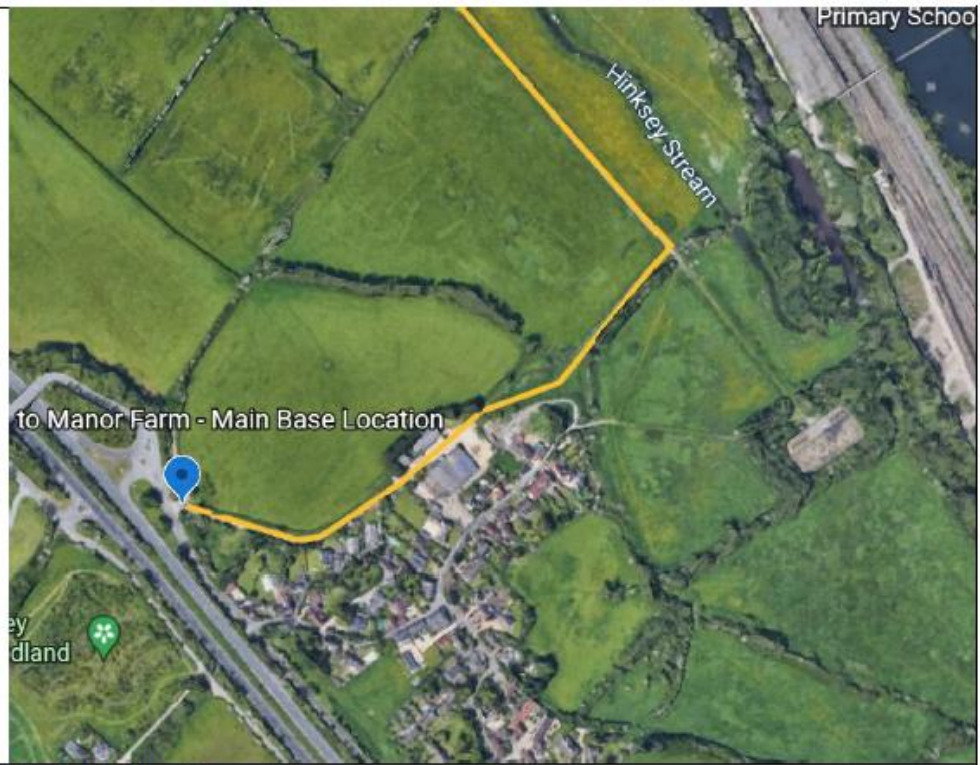


Location of  
Invasive Species





Location of  
Invasive  
Species



Location of  
Invasive  
Species





Location of  
Invasive  
Species



Location of  
Invasive  
Species



Location of  
Invasive  
Species





Location of  
Invasive  
Species



Location of  
Invasive  
Species





Location of  
Invasive  
Species



Location of  
Invasive  
Species



Location of  
Invasive  
Species

