

JUNCTION

# CUSTOMISING THE SPACE

BRANDING OPPORTUNITIES





EAT

DRINK

MEET

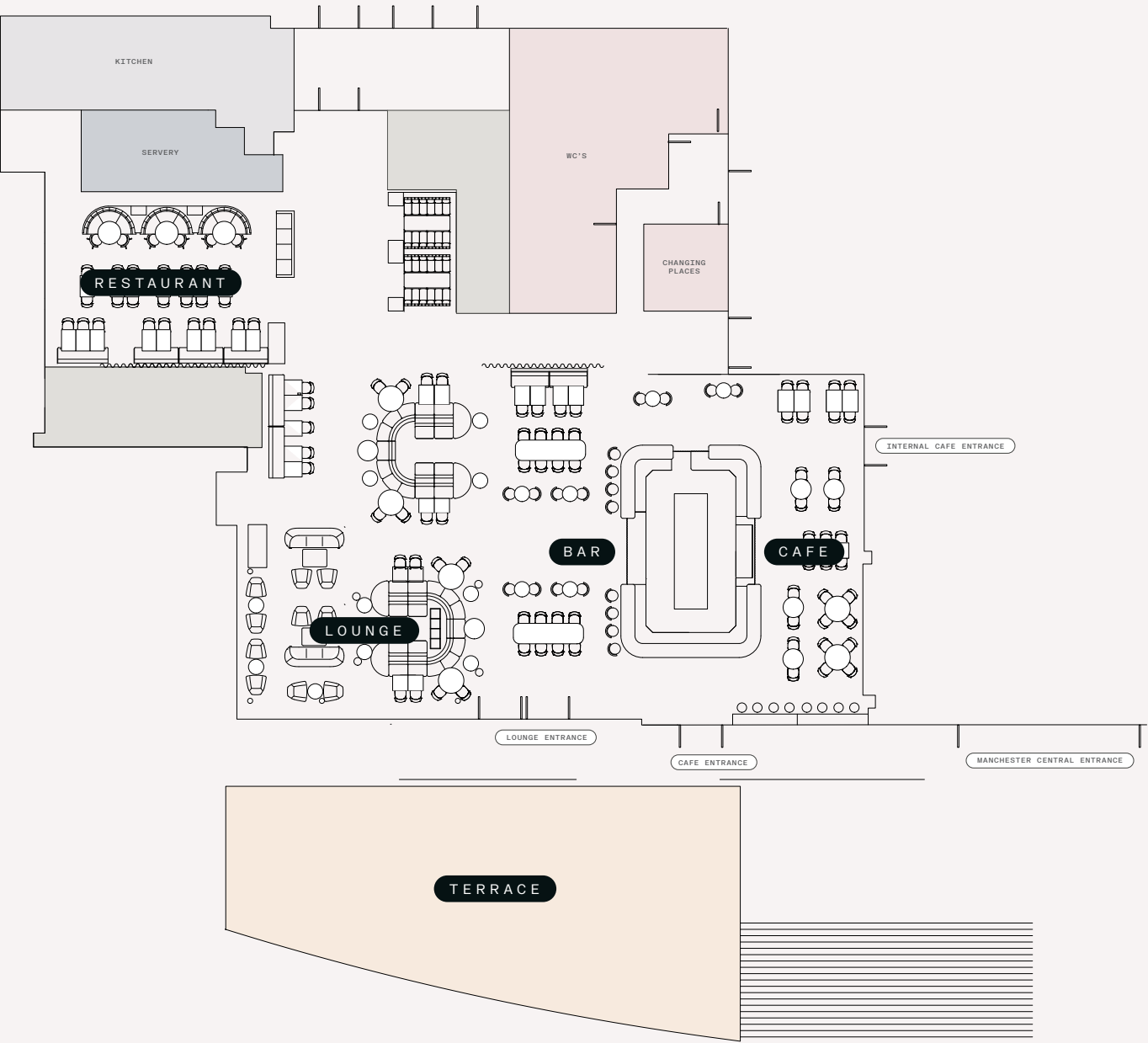
# BRANDING OPPORTUNITIES

AT JUNCTION





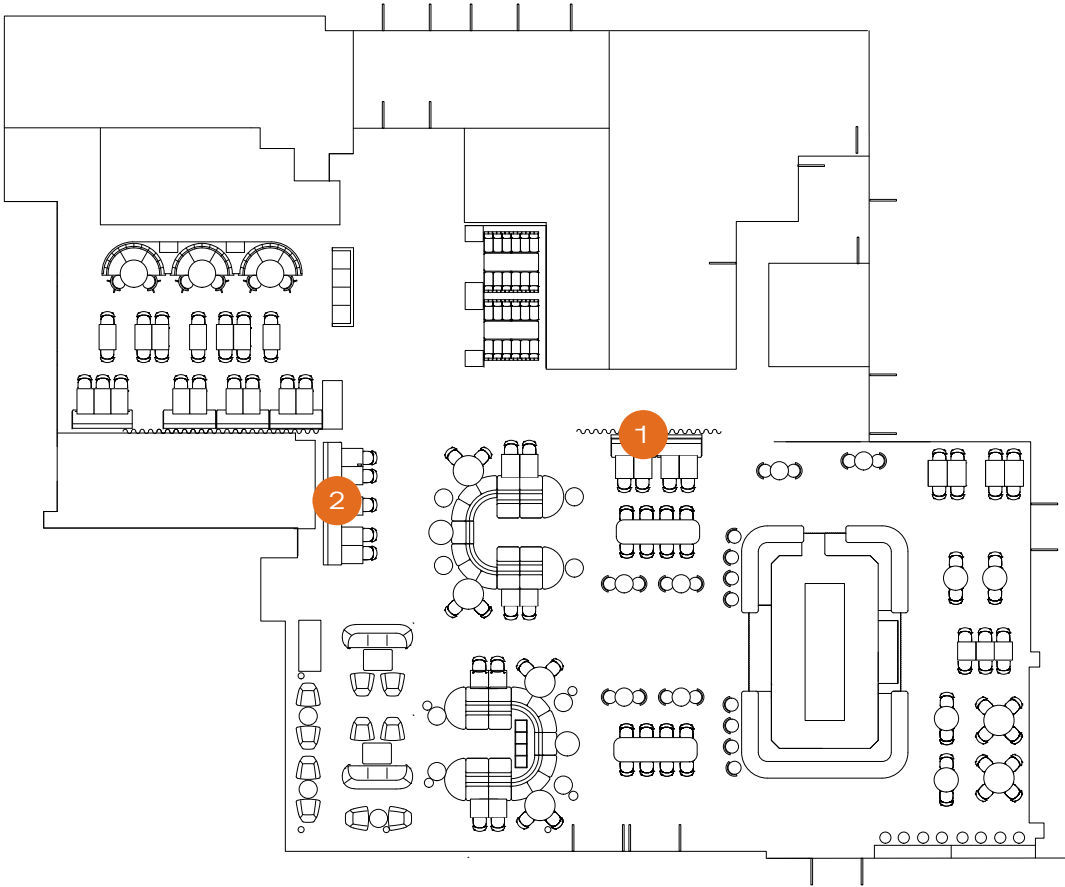
# Capacities and floorplan



SPACE	SEATED	SEATED AND STANDING
Restaurant only	44	—
Restaurant inc. booths	56	86
Lounge Area	122	170
Café Area	40	50
Full venue	218	306
Terrace	18	100

# Screens JPEG or PNG

- Full event duration
- Breakfast or evening reception
- Only available as part of a full venue exclusive hire.
- While the restaurant doesn't include built-in screens, a 55" TV can be hired to display your logo, slideshow or presentation, ideal for subtle branding or professional meetings.



1 1120 x 560



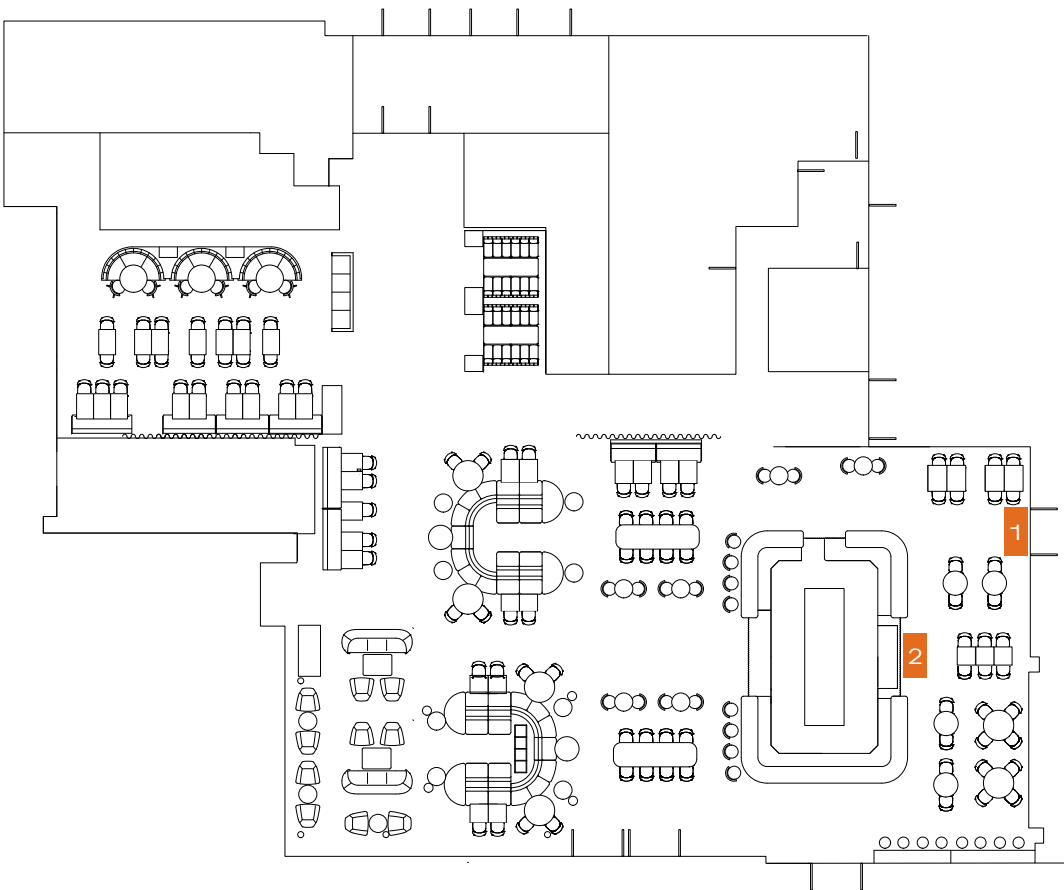
2 1440 x 720



# Floor Graphics

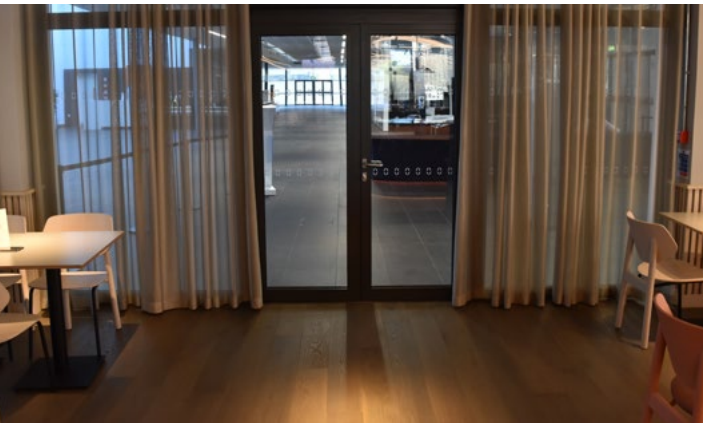
## Café Area Package

Café doors & in front of bar



1 Café doors – 1550 x 750mm

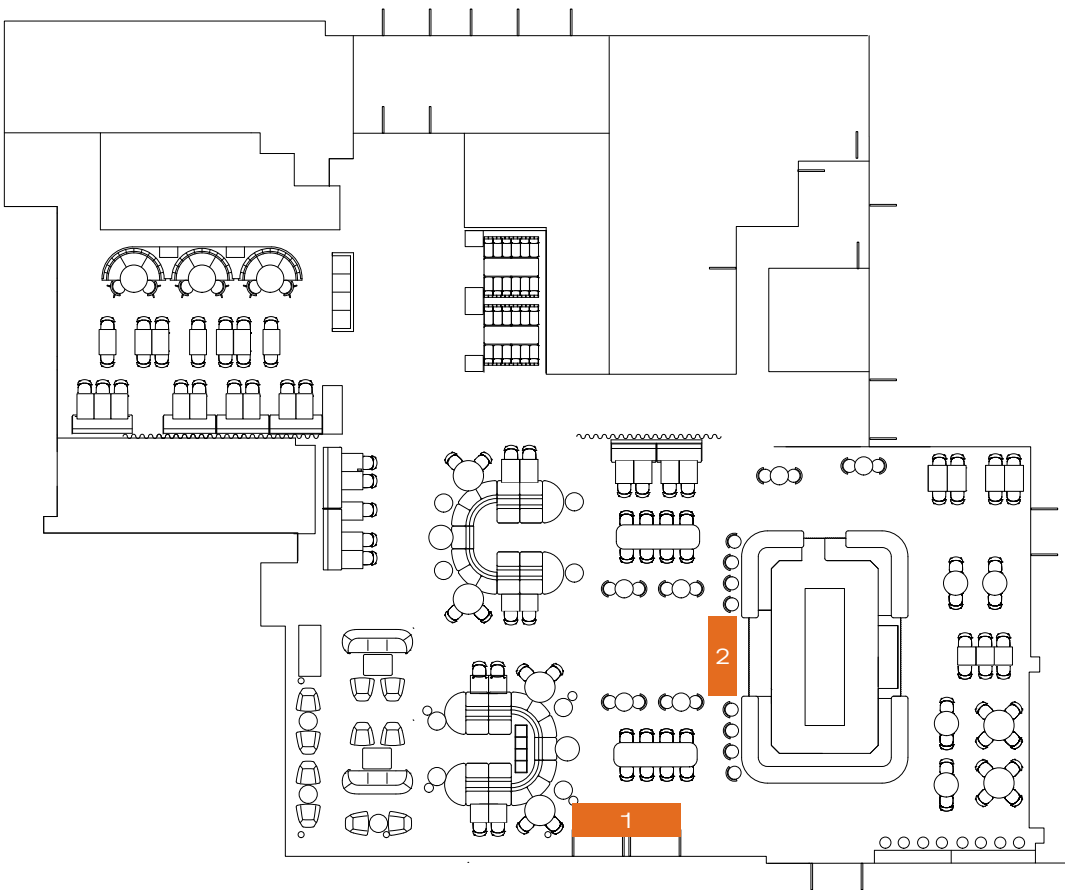
2 In front of bar – 1430 x 750mm



# Floor Graphics

## Lounge Package

Lounge doors & in front of bar



1 Lounge doors – 3850 x 1200mm

2 In front of bar – 2800 x 1020mm

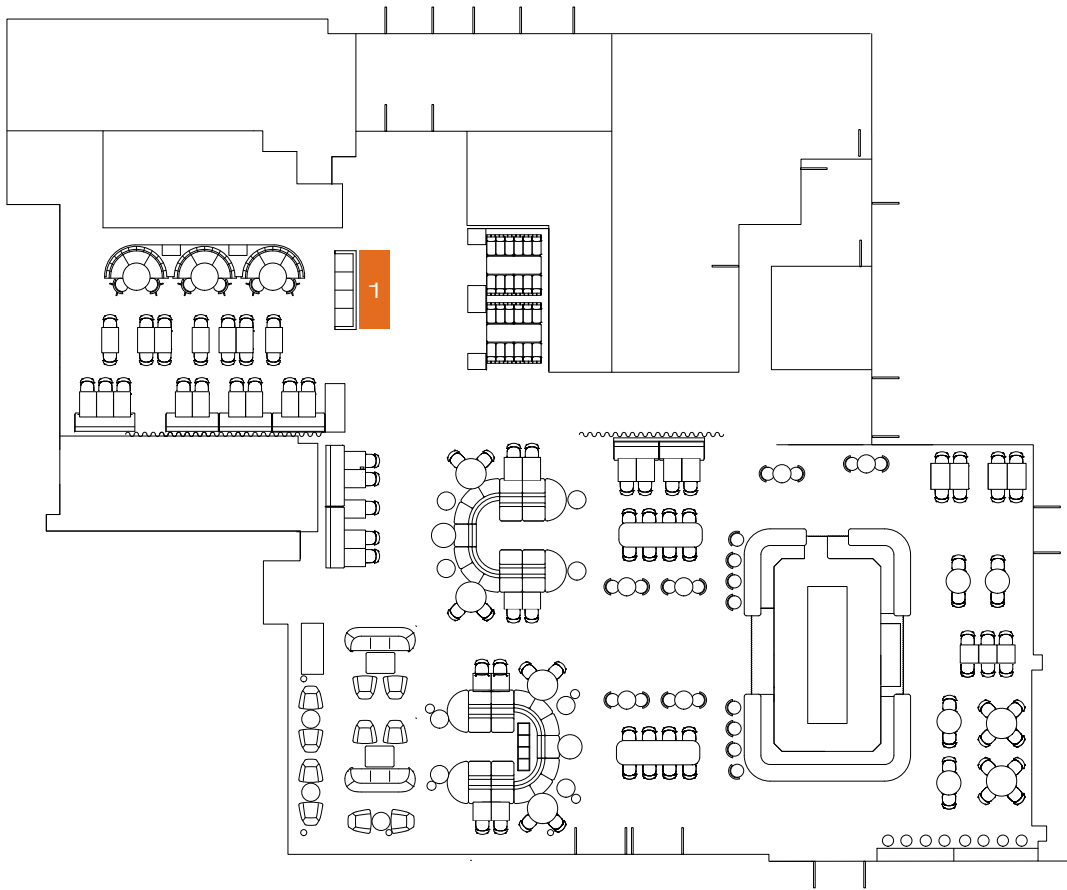




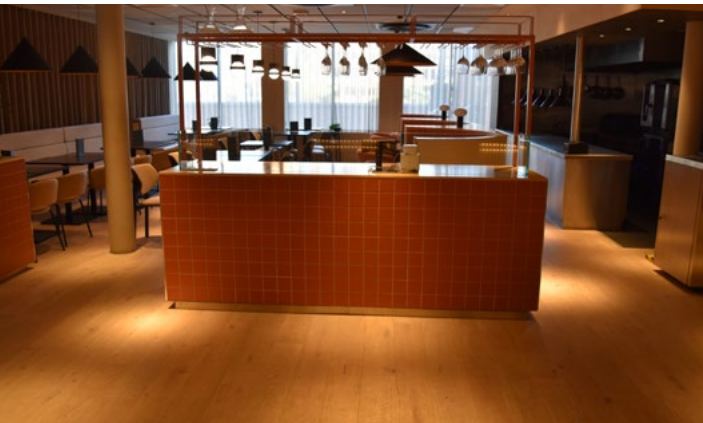
# Floor Graphics

## Restaurant

In front of waiters' station



1 In front of waiters' station – 2655 x 1000mm





# Deli Counter

## Takeaway Cups

Customer Touchpoints

For even more brand exposure, disposable cups can be used for all drinks and proudly displayed in front of both coffee machines at the bar for the duration for your event. Cups must be sourced, branded and provided by the client in 8oz and 12oz sizes

Package also includes a branded takeaway drinks menu placed in the menu holder ensuring your brand in front and centre at every customer touchpoint.\*

Visible printing area – 3.9” (W) x 10.9” (H)

Paper size – 4.1” (W) x 11.7” (H)  
(Half of A4, vertically)

\* Sponsor to provide all artwork



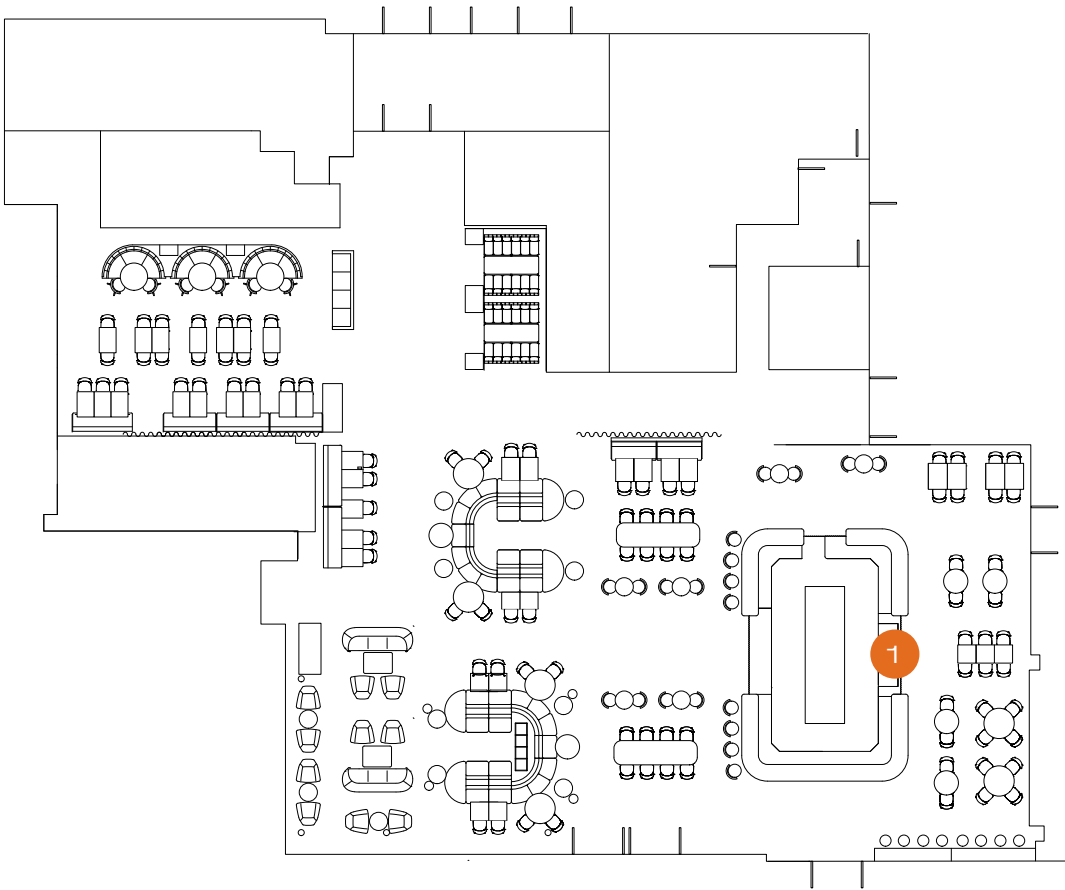
# Deli Counter

## Fridge

Evening

Only available as part of a full venue exclusive hire and in the evening.

Graphic to the front of the deli counter fridge.



1 Front of deli counter fridge – 1430 x 745mm

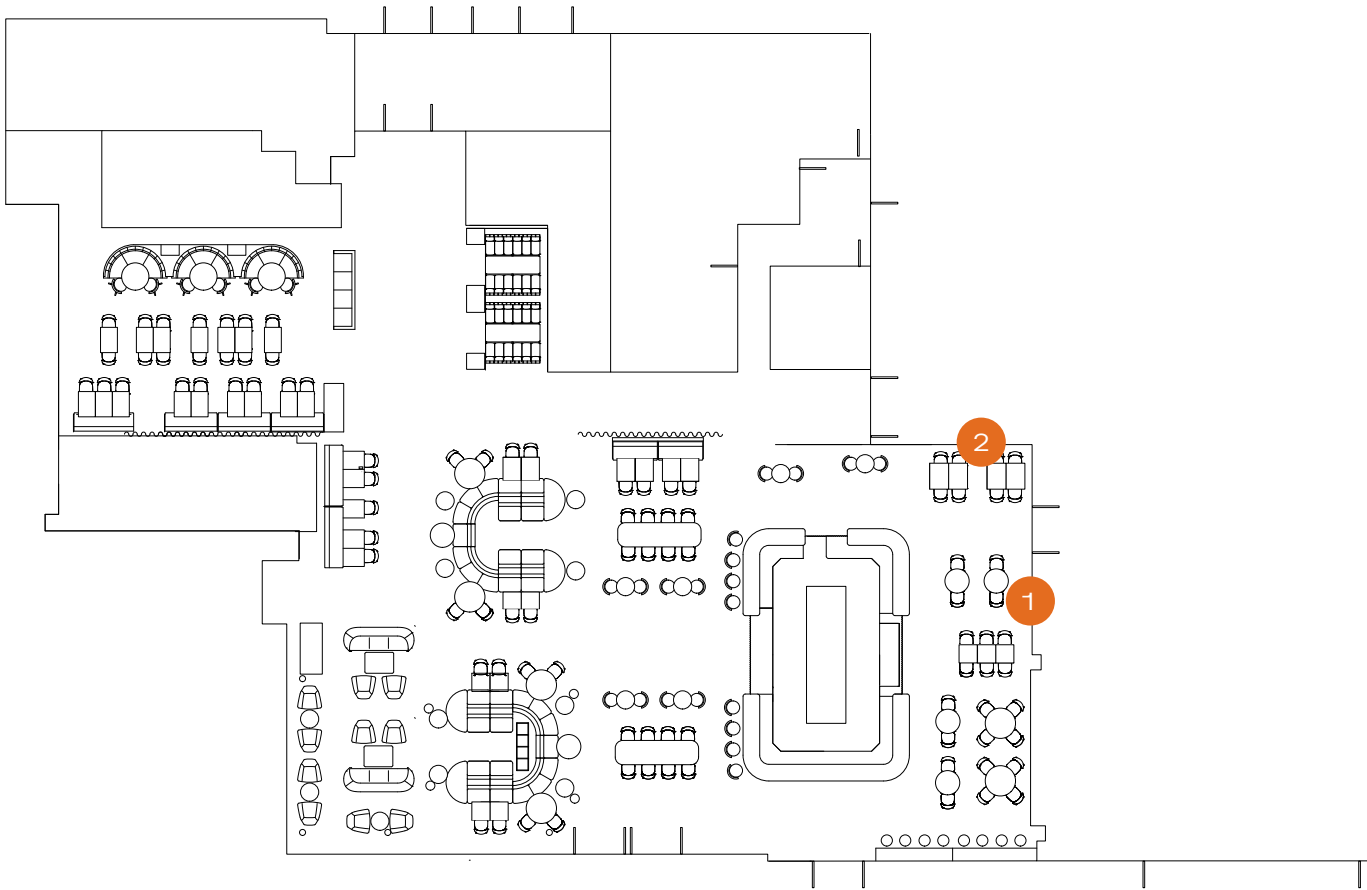




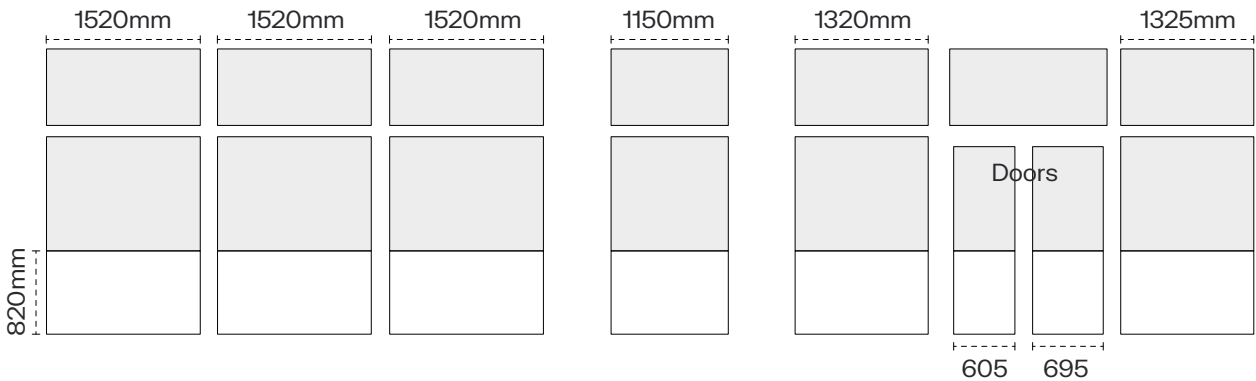
# Internal Window Graphics

Lower window panels internal to Central Foyer

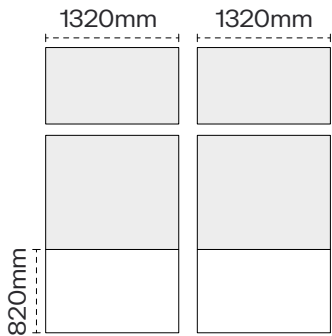
For vinyls on the windows facing the Central Foyer, door panels will feature double-sided branding—ensuring your message is visible and seamless, even when the doors are open.



1 Central foyer



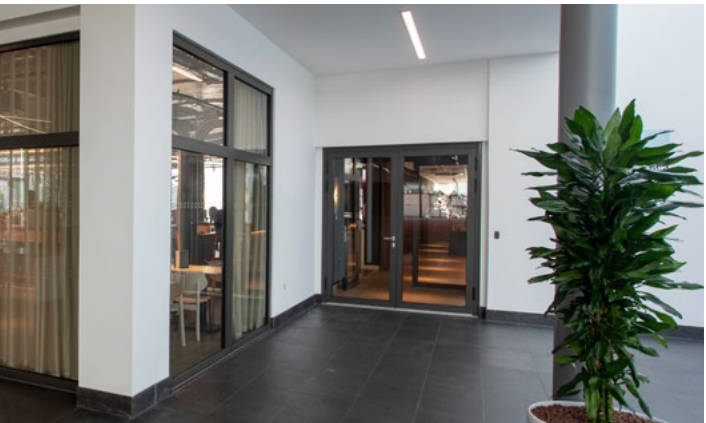
2 Central foyer - side windows



1 Central foyer



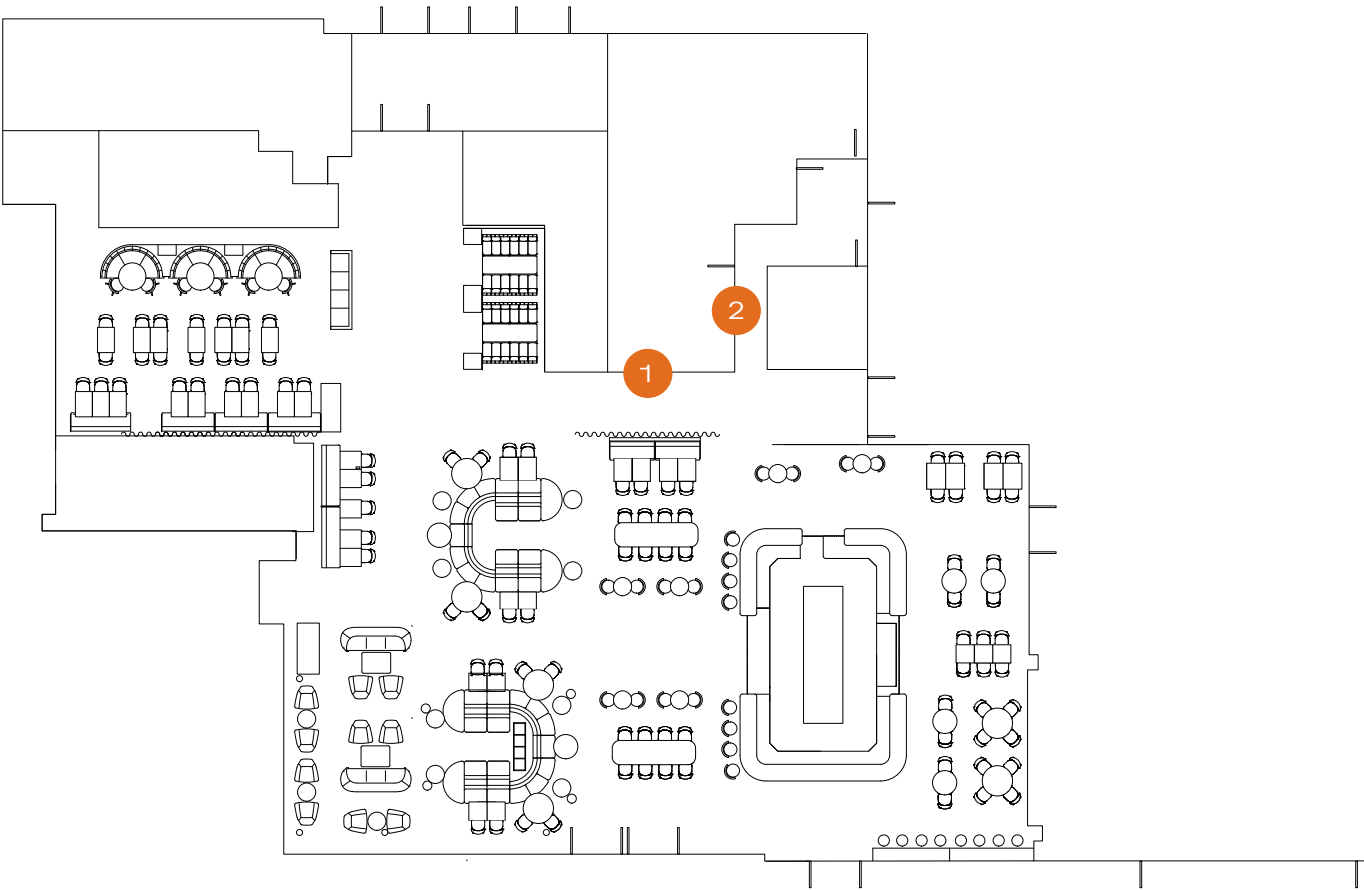
2 Central foyer - side windows



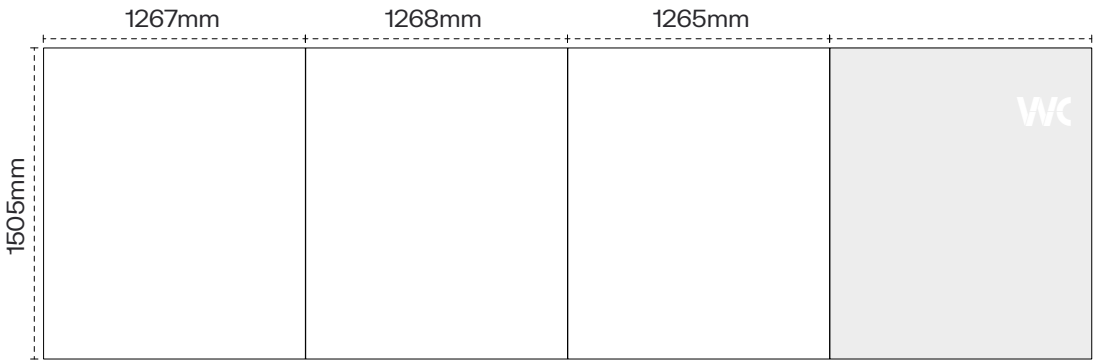
# Mirror Wall

- 3 available panels  
Excluding panel with W/C
- 4 panels in the corridor  
to the toilets

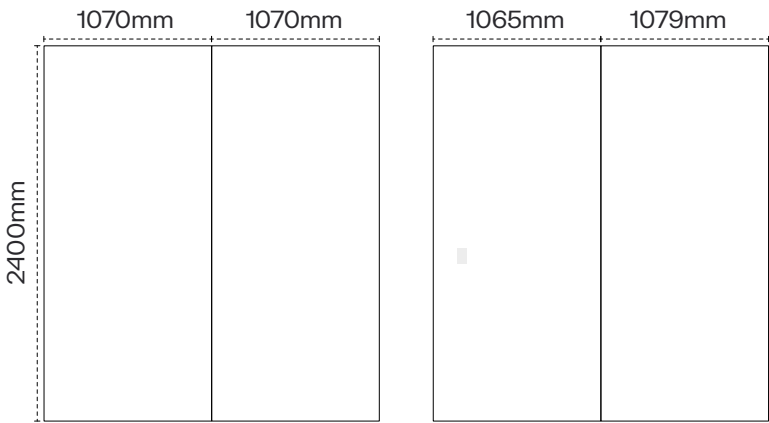
Only available as part of a full venue exclusive hire.



1 Mirror wall



2 W/C corridor



1 Mirror wall



2 W/C corridor

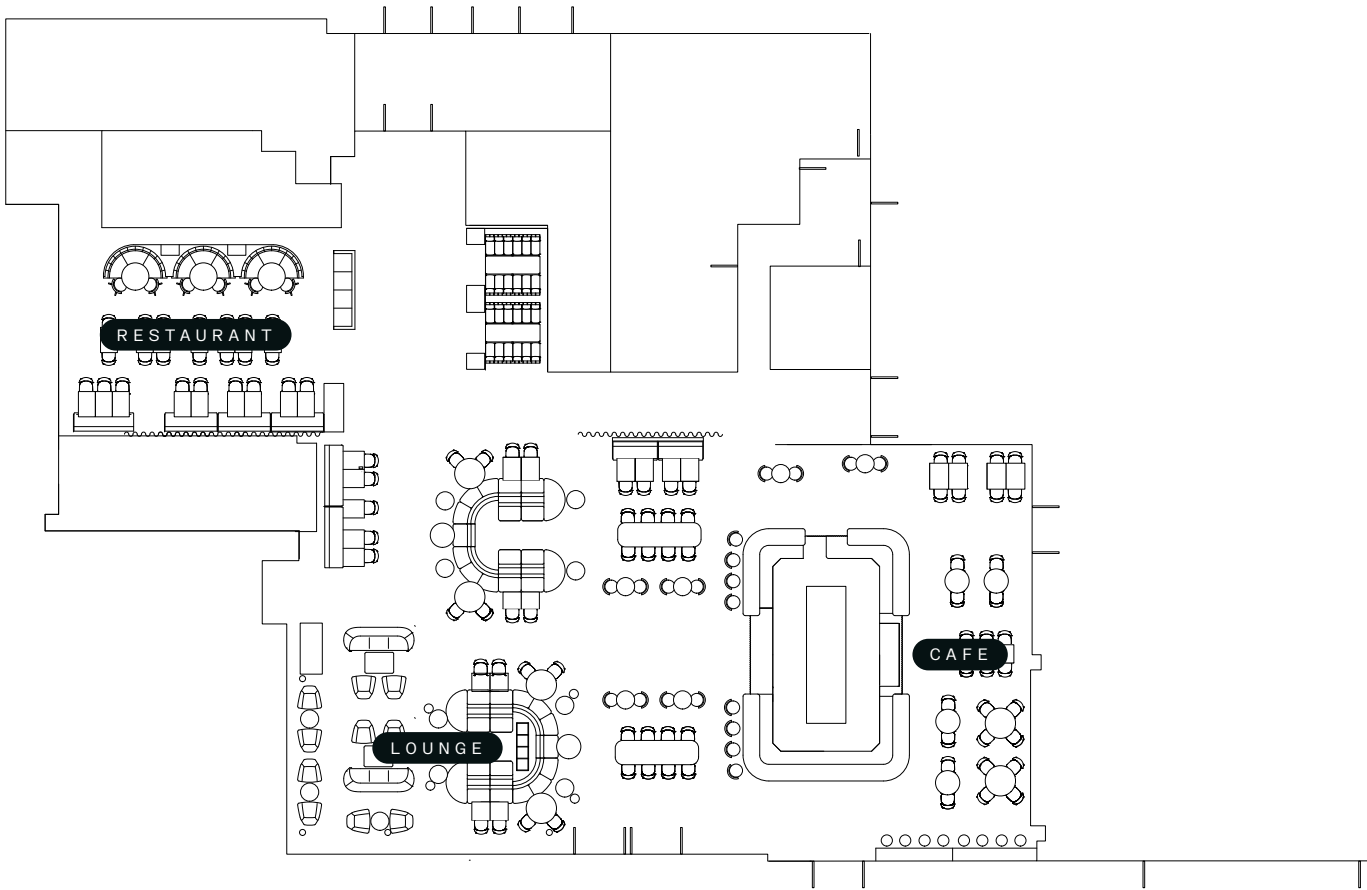




# Table Graphics Full size

Café area	15 x tables 2 x benches
Lounge area	46 x tables
Restaurant	19 x tables 2 x booths
Full venue tables	

Only available as part of a full venue exclusive hire.



# Table Graphics Square

Café area	15 x tables 2 x benches
Lounge area	46 x tables
Restaurant	19 x tables 2 x booths
Full venue tables	

Only available as part of a full venue exclusive hire.

Visible printing area – 600mm x 600mm

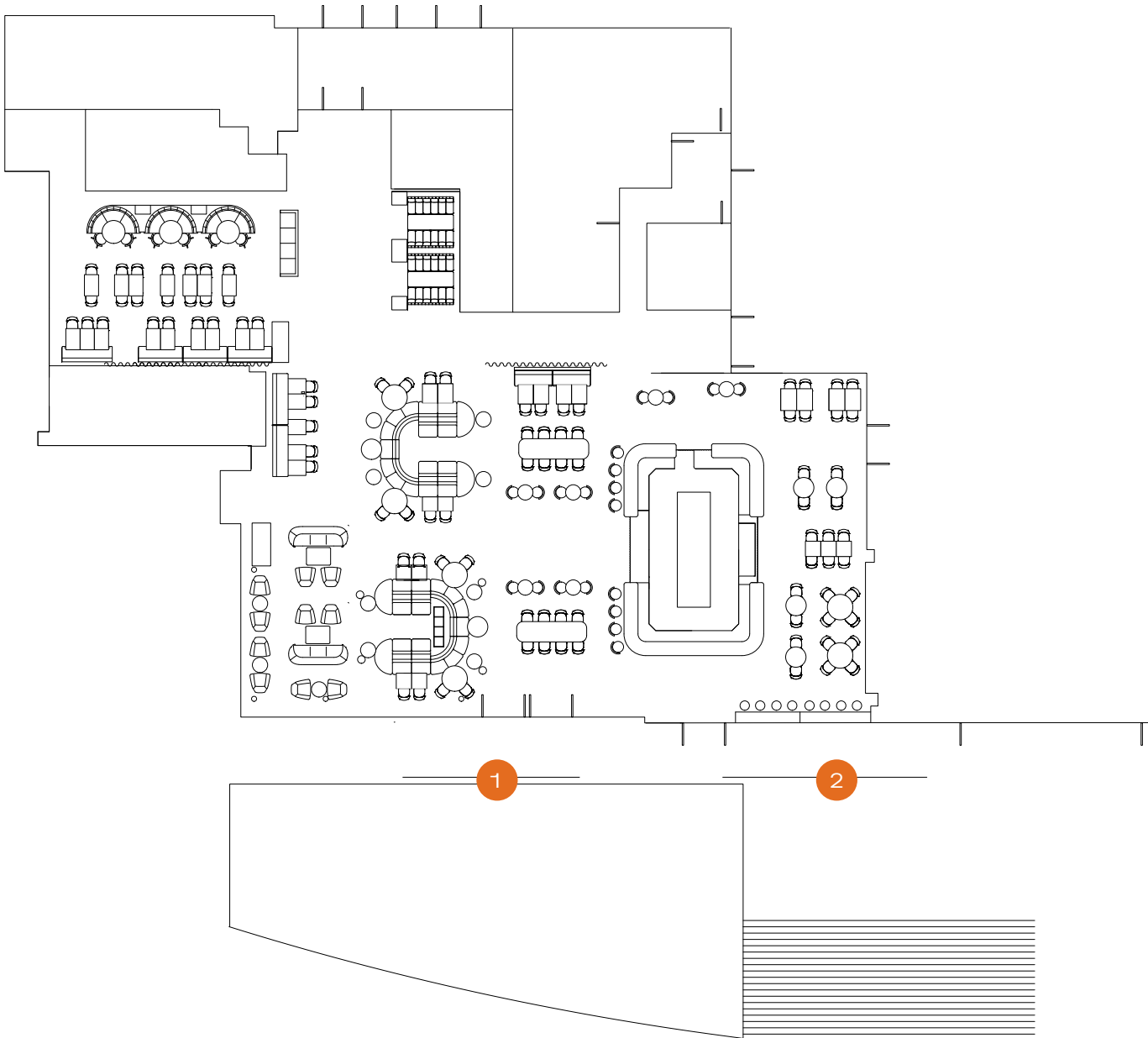


# Glass Balustrades

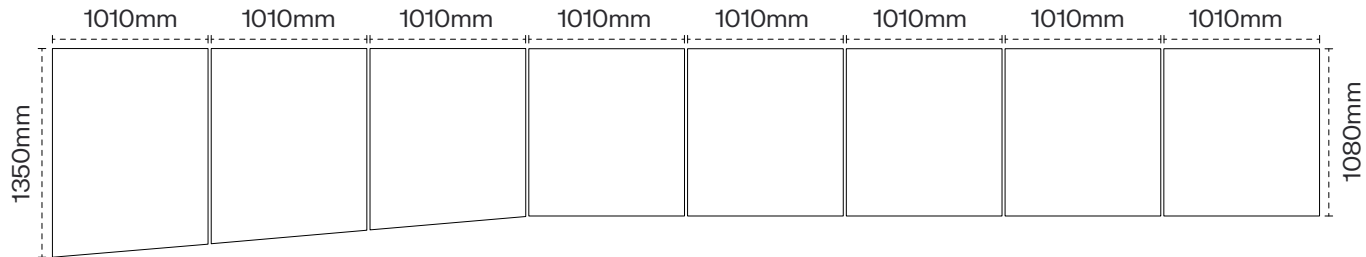
- External Glass Balustrade  
– Lounge side
- External Glass Balustrade  
– Café side

Only available as part of a full venue exclusive hire.

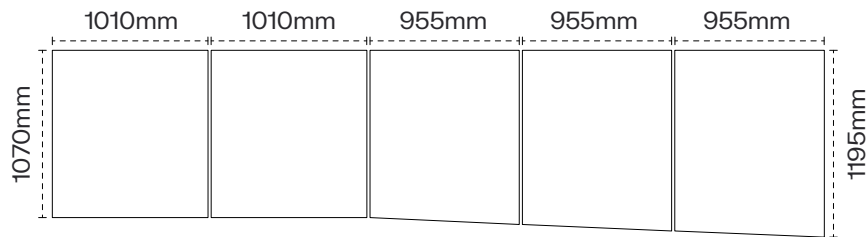
EACH VINYL  
WILL BE TRIMMED  
TO THE SAME  
DIMENSIONS.



1 Lounge side



2 Café side



1 Lounge side



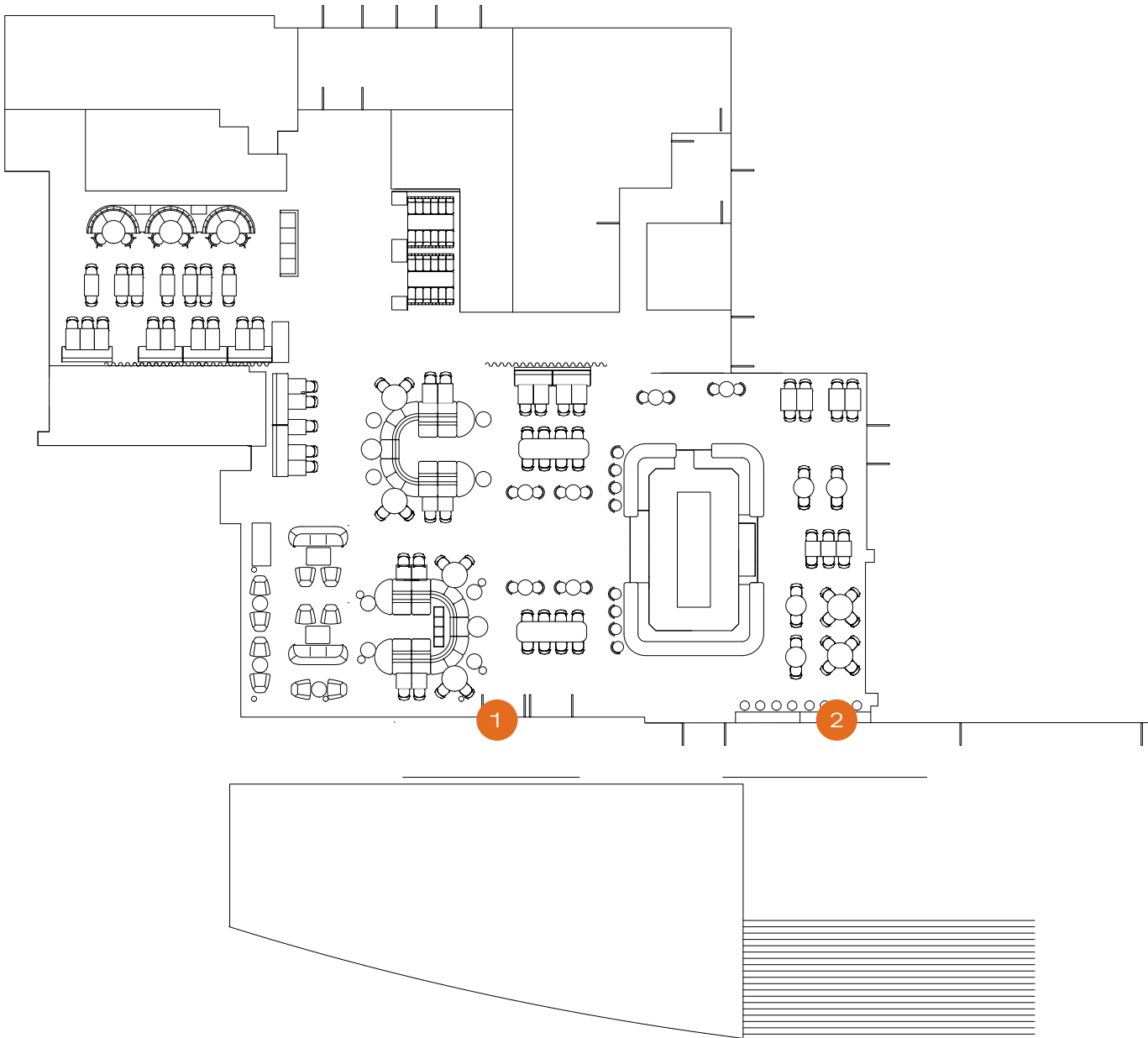
2 Café side



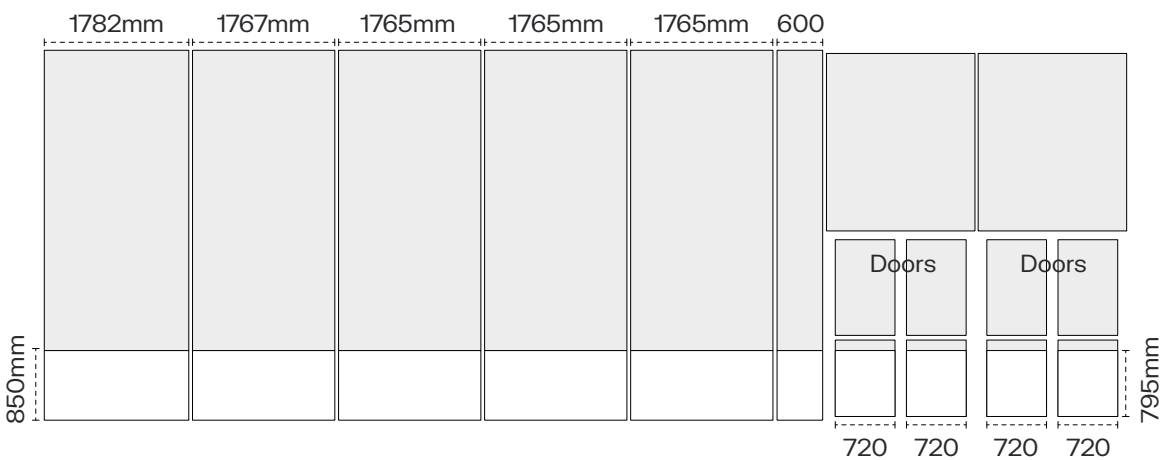


# External Window Graphics

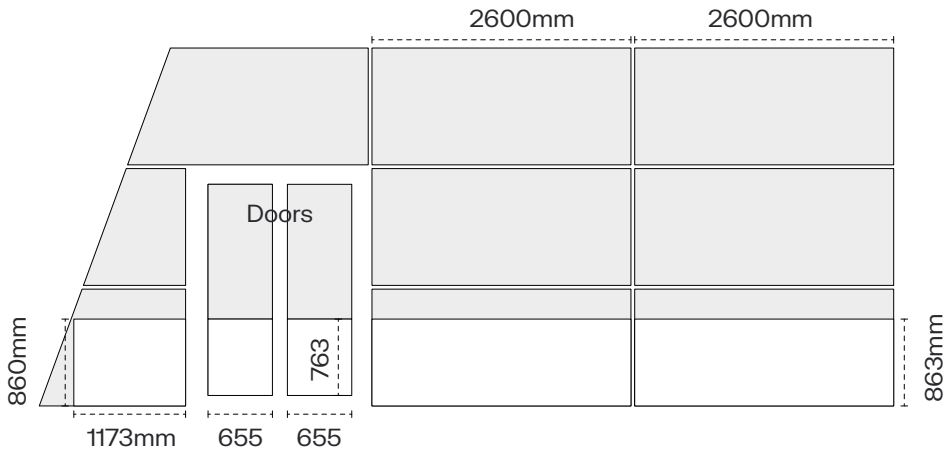
- External lower window panels
- Lounge side
- External lower window panels
- Café side
- Only available as part of a full venue exclusive hire.



1 Lounge side



2 Café side



1 Lounge side



2 Café side

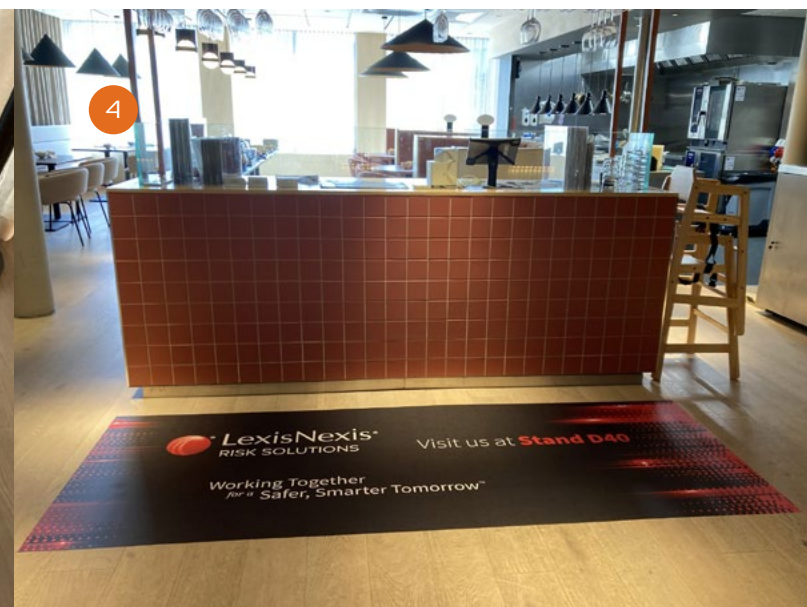
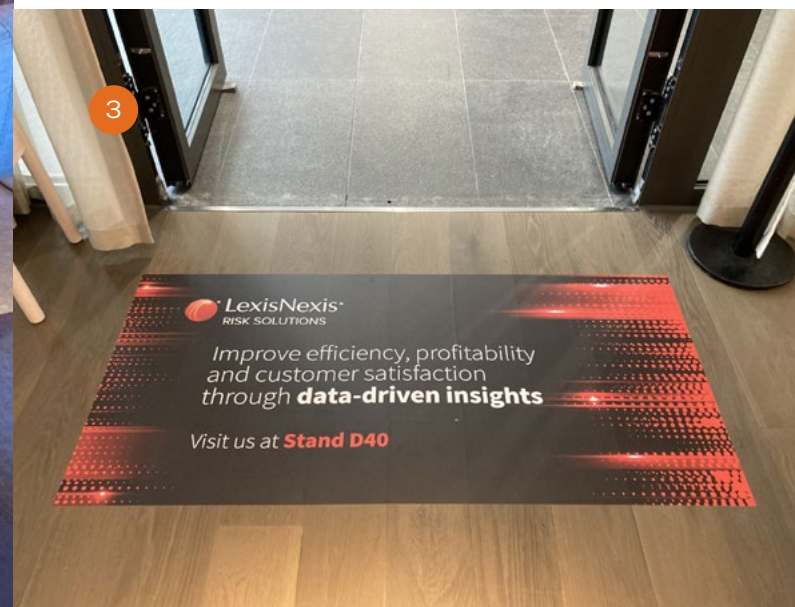






# How it could look

- 1 Mirror wall
- 2 In front of bar
- 3 Café doors
- 4 In front of waiters' station





If you would like to discuss your needs further, please email [catering@manchestercentral.co.uk](mailto:catering@manchestercentral.co.uk) or alternatively, call +44 (0)0161 834 2700 to speak with a member of the team.

V I N Y L   B R A N D I N G

Include this disclaimer copy: All vinyl branding must be booked through your Event Manager, who will coordinate installation and removal with our approved supplier. Please note that organisers must use our supplier exclusively and provide all final artwork. All branding is only available as an exclusive hire.

A R T W O R K

Organiser is responsible for supply of all artwork.



# JUNCTION



EAT DRINK MEET  
AT MANCHESTER CENTRAL



[JUNCTIONMANCHESTER.COM](http://JUNCTIONMANCHESTER.COM)