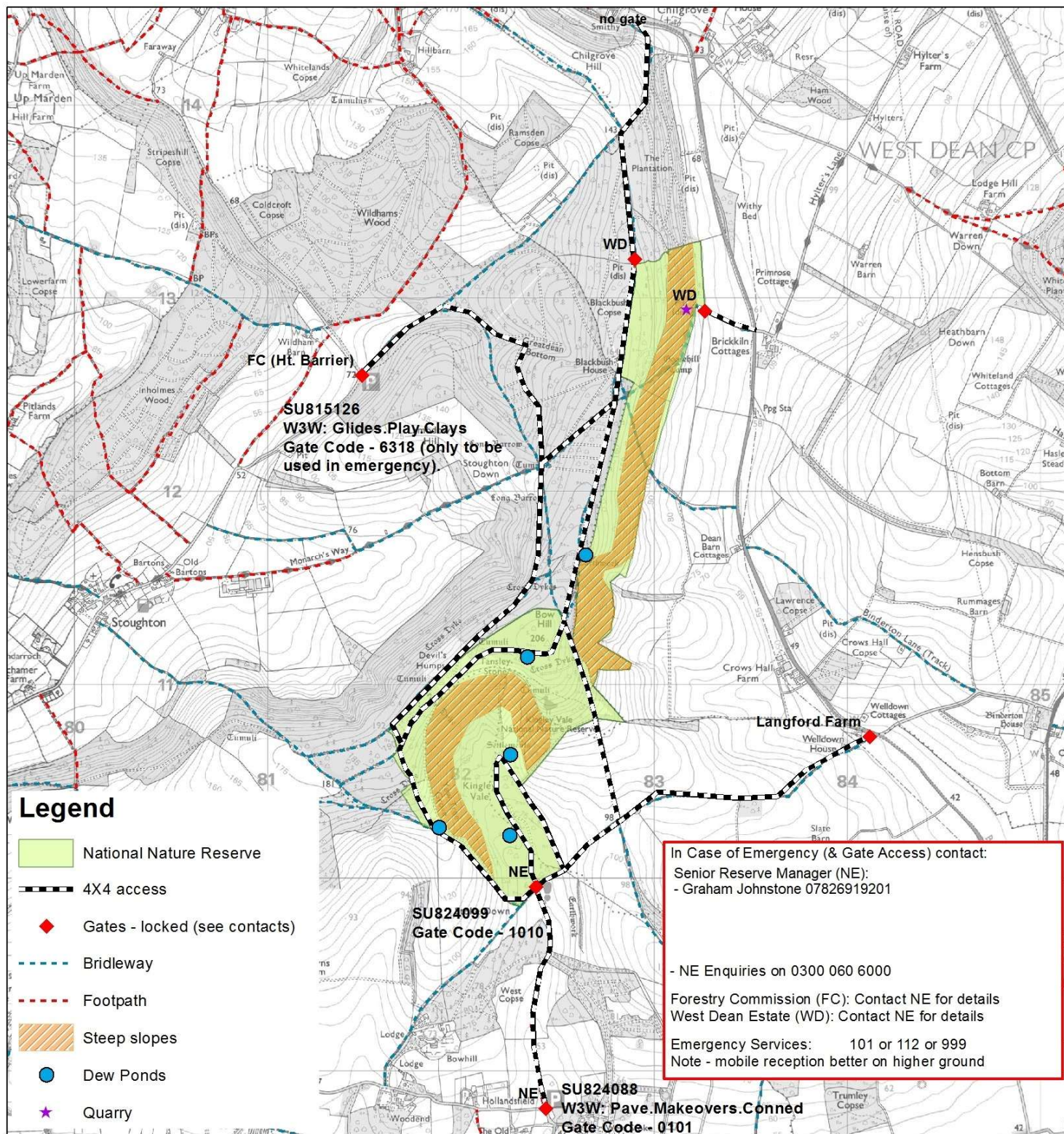


Kingley Vale National Nature Reserve

Site Hazard Map



Hazards

Adders

Adders are present, take care not to disturb, especially in Spring. In the unlikely event of a bite seek immediate medical attention.
 - remain calm and dont panic, adder bites are rarely deadly
 - keep bitten limb as still as possible to prevent venom spreading
 - remove jewellery, watches from bitten limb and loosen clothing

Ticks

Ticks may be found in areas of scrub or grass. Wear long trousers and inspect exposed skin during and after your visit.
 Ticks can be easily removed with tweezers, grasp tick as close to skin as possible and unscrew anti-clockwise. Should a red rash appear seek medical attention.

Unexpoded Ordnance

The reserve was used as a firing range in the Second World War. If you encounter any unexploded ordnance please do not disturb, note location and report to the Reserve Manager and the Police.

Tree Safety / Ash Dieback Disease

The reserve has many ash trees with Ash Dieback disease. Avoid trees in high wnds, avoid congregating under ash trees and stick to PROW /Nature Trail where possible.

Please note that grazing animals may be present within mobile compartments'



0 500 1,000 2,000
Meters



Scale (at A3): 1:20,000

Map produced by Steve Walker,
 South Downs Team
 Date: 12/06/2020. Map Reference: KV.HS.01-SH
 Contains, or is derived from, information supplied
 by Ordnance Survey. © Crown copyright and
 database rights 2017. Ordnance Survey 100022021.