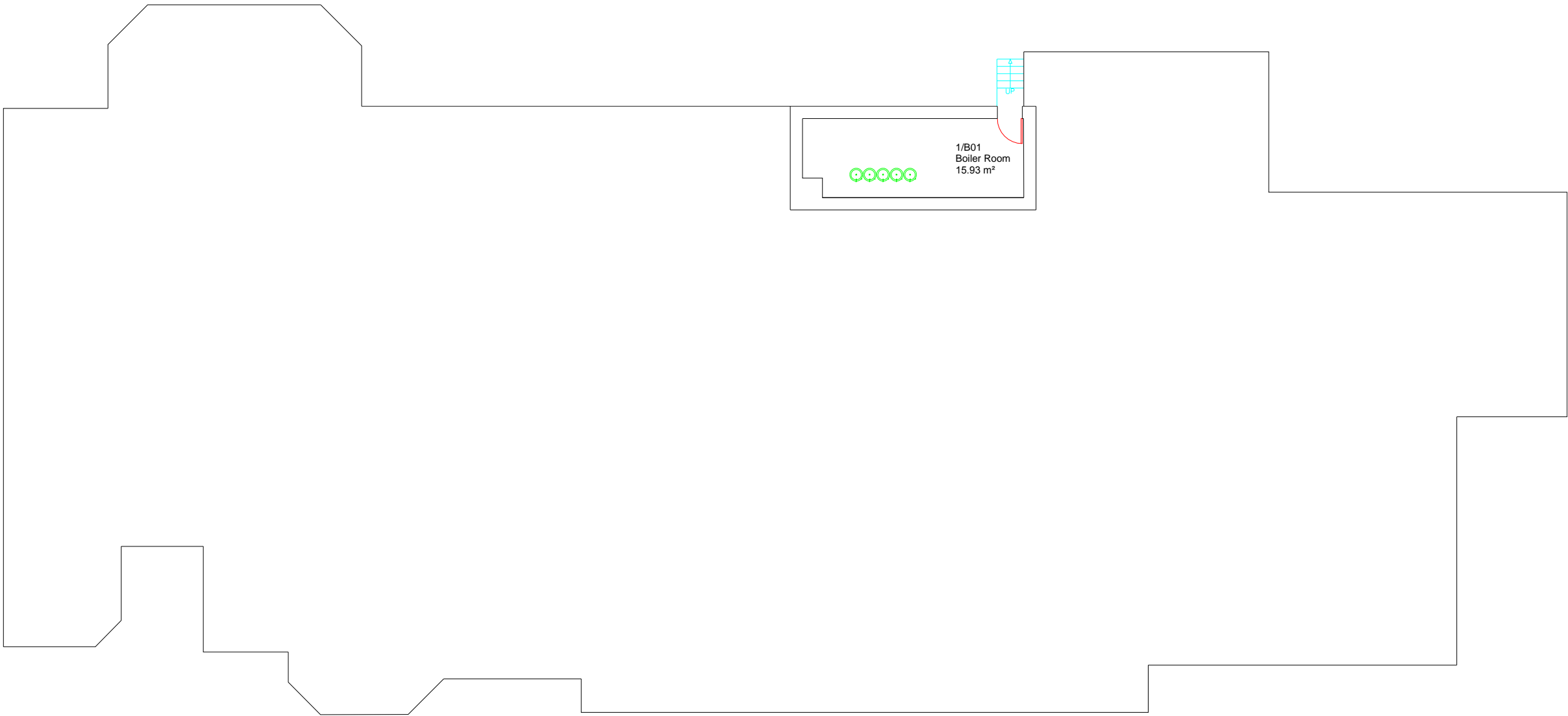




Dundonald Primary School - Basement
Block A
GIA: 16.3 m²



- Notes:
- WATER ASSETS
- EXPANSION VESSEL
 - TANK
 - CALORIFIER
 - BOILER
 - BUTLER SINK HOT AND COLD
 - BUTLER SINK MIXED/COLD
 - SINK HOT AND COLD
 - SINK MIXED/COLD
 - SPRAY SINK
 - WASHING MACHINE
 - DISHWASHER
 - WATER COOLER
 - WATER HEATER
 - POINT OF USE
 - HOT WATER DISPENSER/HOT DRINKS MACHINE
 - WASH HAND BASIN MIXED
 - WASH HAND BASIN HOT AND COLD
 - WASH HAND BASIN COLD
 - SHOWER HEAD
 - STEAM OVEN
 - DRINKING FOUNTAIN
 - TAP
 - THERMOSTATIC MIXING VALVES
 - BATH
 - SHOWER
 - WC
 - URINAL



Rev.	Amendment	Date
		
Project: Measured Building Surveys		
Site: Dundonald Primary School Dundonald Road, London SW19 3QH		
Title: Floor Plan Basement Block A		
Code: PR026-CAD00X-DNP-01		
Scale: 1-150	Date: 23/03/2015	
 www.complement-surveys.co.uk T 020 7226 6761		

Dundonald Primary School - Ground Floor
Block A
GIA: 749.0 m²

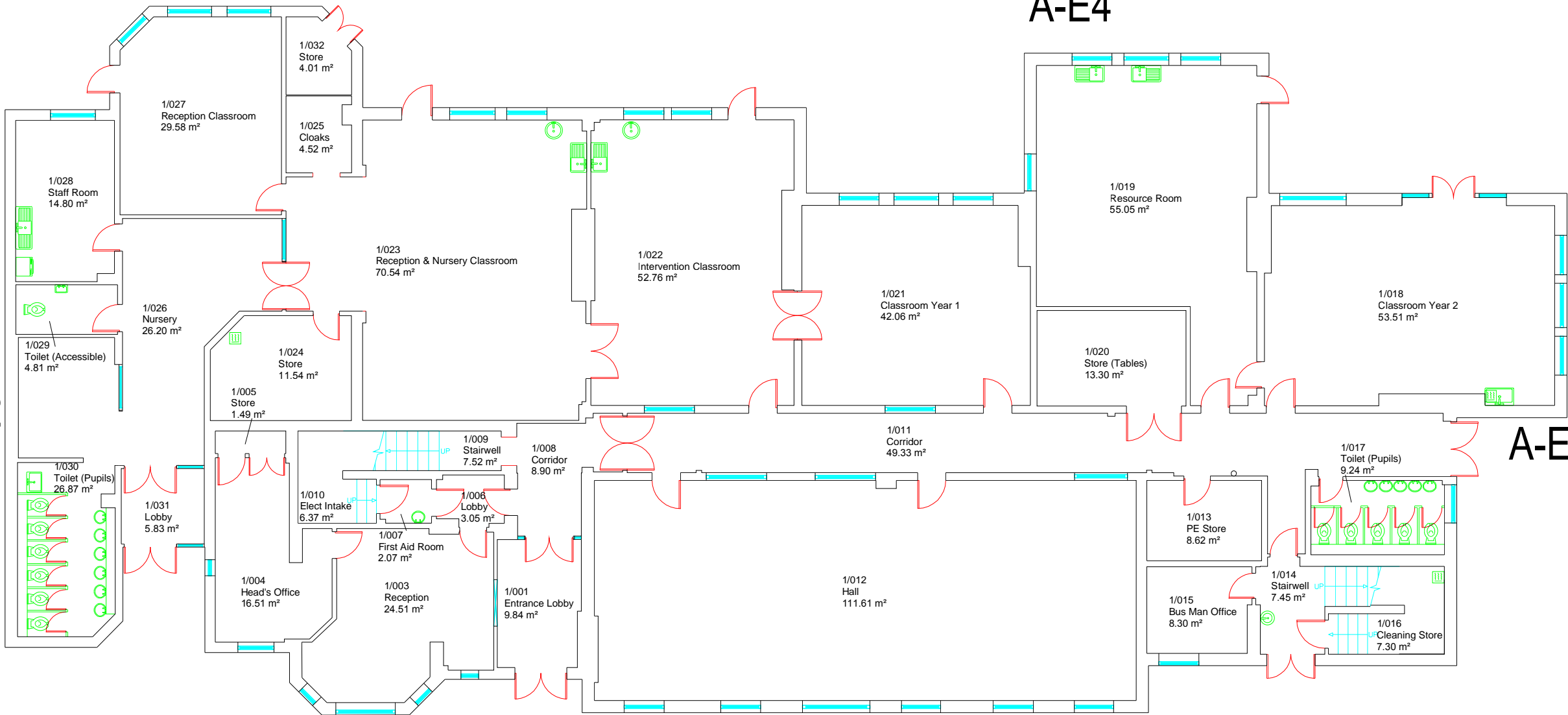
A-E3

A-E4

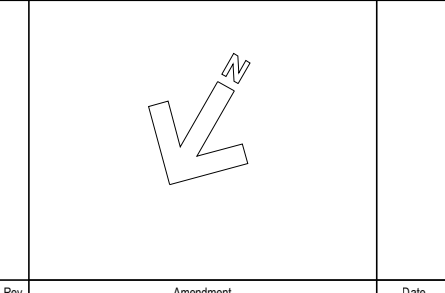
A-E2

A-E5

A-E1



- Notes:
- EXPANSION VESSEL
 - TANK
 - CALORIFIER
 - BOILER
 - BUTLER SINK HOT AND COLD
 - BUTLER SINK MIXED/COLD
 - SINK HOT AND COLD
 - SINK MIXED/COLD
 - SPRAY SINK
 - WASHING MACHINE
 - DISHWASHER
 - WATER COOLER
 - WATER HEATER
 - POINT OF USE
 - HOT WATER DISPENSER/HOT DRINKS MACHINE
 - WASH HAND BASIN MIXED
 - WASH HAND BASIN HOT AND COLD
 - WASH HAND BASIN COLD
 - SHOWER HEAD
 - STEAM OVEN
 - DRINKING FOUNTAIN
 - TAP
 - THERMOSTATIC MIXING VALVES
 - BATH
 - WC
 - SHOWER
 - URINAL



Rev.	Amendment	Date
------	-----------	------



Project: Measured Building Surveys

Site: Dundonald Primary School
Dundonald Road, London SW19 3QH

Title: Floor Plan
Ground Floor
Block A

Code: PR026-CAD00X-DNP-02

Scale: 1-150 Date: 23/03/2015

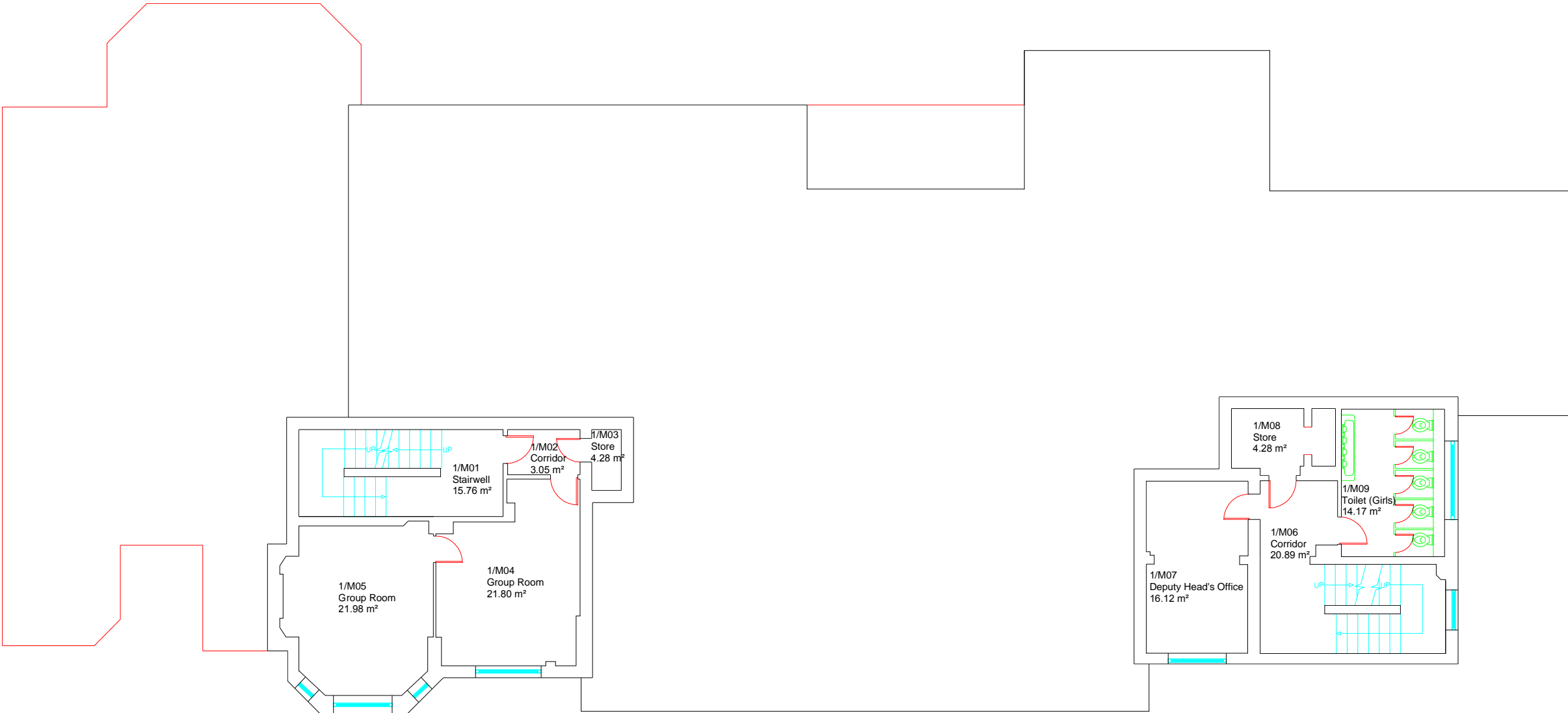
complement consulting

www.complement-surveys.co.uk
T 020 7226 6761

Dundonald Primary School - Mezzanine Floor

Block A

GIA: 130.4 m²



- Notes:
- WATER ASSETS
- EXPANSION VESSEL
 - TANK
 - CALORIFIER
 - BOILER
 - BUTLER SINK HOT AND COLD
 - BUTLER SINK MIXED/COLD
 - SINK HOT AND COLD
 - SINK MIXED/COLD
 - SPRAY SINK
 - WASHING MACHINE
 - DISHWASHER
 - WATER COOLER
 - WATER HEATER
 - POINT OF USE
 - HOT WATER DISPENSER/HOT DRINKS MACHINE
 - WASH HAND BASIN MIXED
 - WASH HAND BASIN HOT AND COLD
 - WASH HAND BASIN COLD
 - SHOWER HEAD
 - STEAM OVEN
 - DRINKING FOUNTAIN
 - TAP
 - THERMOSTATIC MIXING VALVES
 - BATH
 - WC
 - SHOWER
 - URINAL



Rev.	Amendment	Date
------	-----------	------



Project: Measured Building Surveys

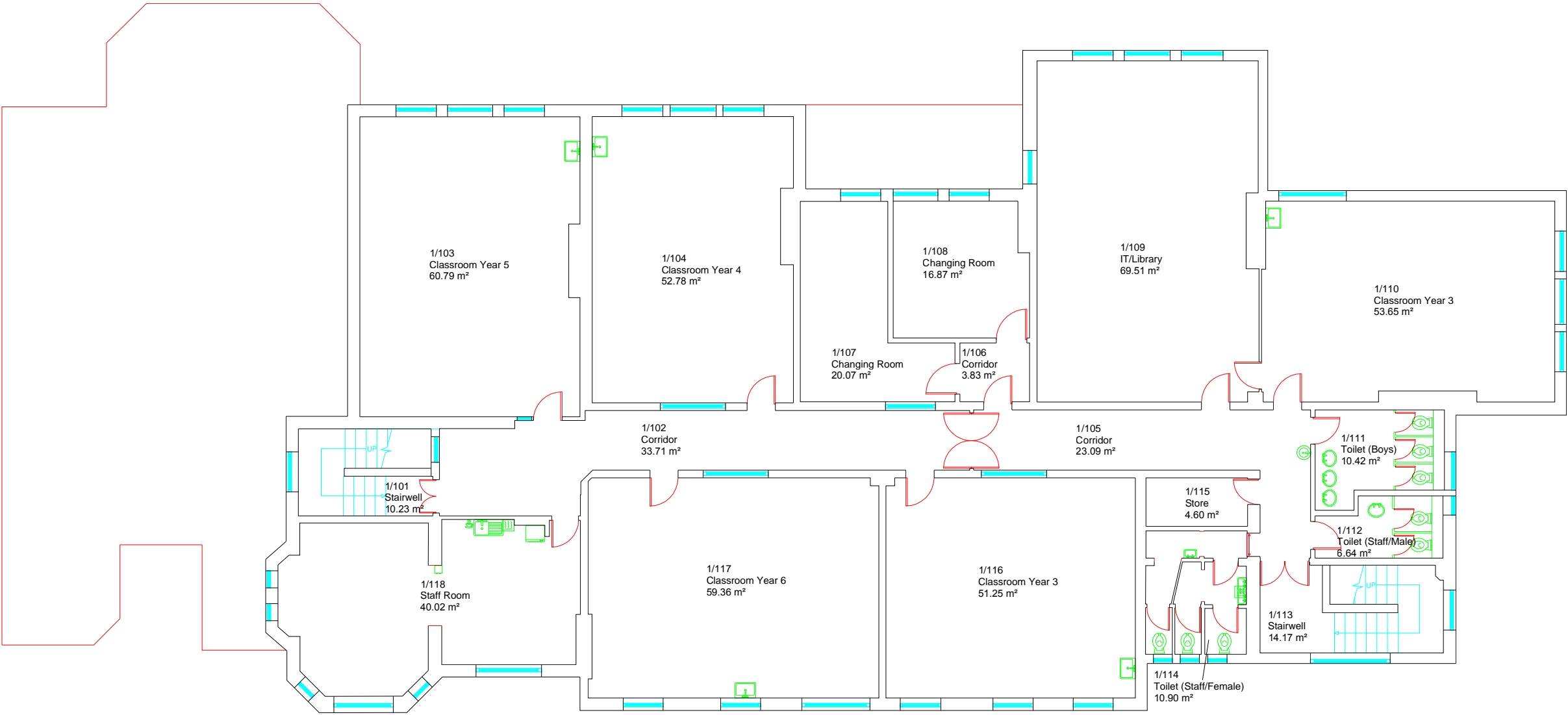
Site: Dundonald Primary School
Dundonald Road, London SW19 3QH

Title: Floor Plan
Mezzanine Floor
Block A

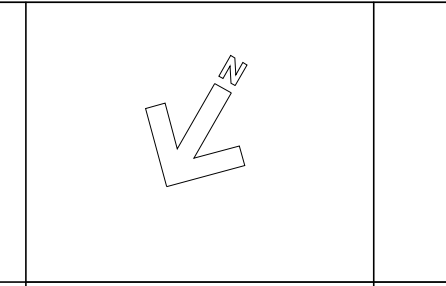
Code: PR026-CAD00X-DNP-03

Scale: 1-150 Date: 23/03/2015

Dundonald Primary School - First Floor
Block A
GIA: 584.4 m²



- Notes:
- WATER ASSETS
- EXPANSION VESSEL
 - TANK
 - CALORIFIER
 - BOILER
 - BUTLER SINK HOT AND COLD
 - BUTLER SINK MIXED/COLD
 - SINK HOT AND COLD
 - SINK MIXED/COLD
 - SPRAY SINK
 - WASHING MACHINE
 - DISHWASHER
 - WATER COOLER
 - WATER HEATER
 - POINT OF USE
 - HOT WATER DISPENSER/HOT DRINKS MACHINE
 - WASH HAND BASIN MIXED
 - WASH HAND BASIN HOT AND COLD
 - WASH HAND BASIN COLD
 - SHOWER HEAD
 - STEAM OVEN
 - DRINKING FOUNTAIN
 - TAP
 - THERMOSTATIC MIXING VALVES
 - BATH
 - WC
 - SHOWER
 - URINAL



Rev.	Amendment	Date
------	-----------	------



Project: Measured Building Surveys

Site: Dundonald Primary School
Dundonald Road, London SW19 3QH

Title: Floor Plan
First Floor
Block A

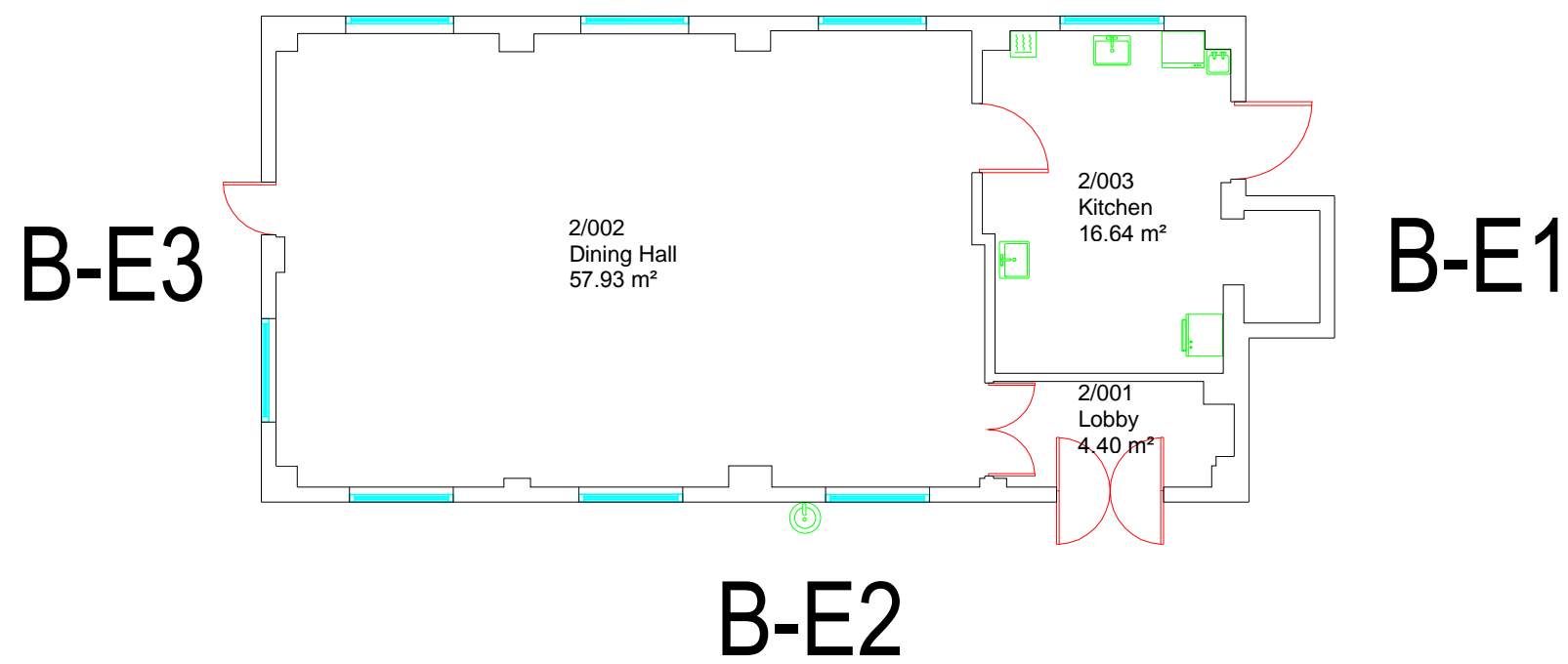
Code: PR026-CAD00X-DNP-04

Scale: 1-150 Date: 23/03/2015

Dundonald Primary School - Ground Floor

Block B

GIA: 81.4 m²



- Notes:
- WATER ASSETS
- EXPANSION VESSEL
 - TANK
 - CALORIFIER
 - BOILER
 - BUTLER SINK HOT AND COLD
 - BUTLER SINK MIXED/COLD
 - SINK HOT AND COLD
 - SINK MIXED/COLD
 - SPRAY SINK
 - WASHING MACHINE
 - DISHWASHER
 - WATER COOLER
 - WATER HEATER
 - POINT OF USE
 - HOT WATER DISPENSER/HOT DRINKS MACHINE
 - WASH HAND BASIN MIXED
 - WASH HAND BASIN HOT AND COLD
 - WASH HAND BASIN COLD
 - SHOWER HEAD
 - STEAM OVEN
 - DRINKING FOUNTAIN
 - TAP
 - THERMOSTATIC MIXING VALVES
 - BATH
 - WC
 - SHOWER
 - URINAL

Rev.	Amendment	Date
------	-----------	------

merton

Project: Measured Building Surveys

Site: Dundonald Primary School
Dundonald Road, London SW19 3QH

Title: Floor Plan
Ground Floor
Block B

Code: PR026-CAD00X-DNP-05

Scale: 1-100 Date: 23/03/2015

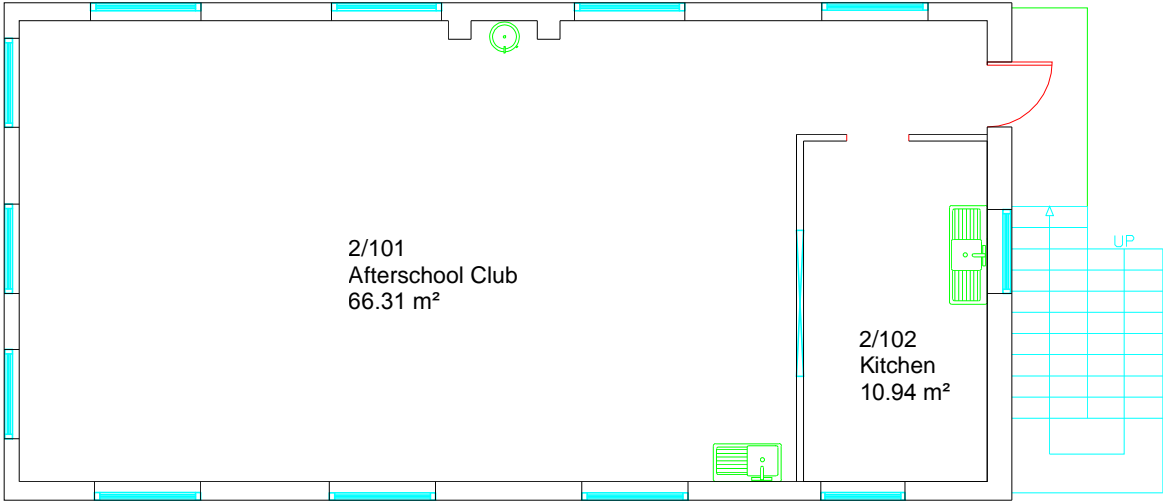
complement
consulting

www.complement-surveys.co.uk
T 020 7226 6761

Dundonald Primary School - First Floor



Block B

GIA: 78.0 m²



- Notes:
- WATER ASSETS
- EXPANSION VESSEL
 - TANK
 - CALORIFIER
 - BOILER
 - BUTLER SINK HOT AND COLD
 - BUTLER SINK MIXED/COLD
 - SINK HOT AND COLD
 - SINK MIXED/COLD
 - SPRAY SINK
 - WASHING MACHINE
 - DISHWASHER
 - WATER COOLER
 - WATER HEATER
 - POINT OF USE
 - HOT WATER DISPENSER/HOT DRINKS MACHINE
 - WASH HAND BASIN MIXED
 - WASH HAND BASIN HOT AND COLD
 - WASH HAND BASIN COLD
 - SHOWER HEAD
 - STEAM OVEN
 - DRINKING FOUNTAIN
 - TAP
 - THERMOSTATIC MIXING VALVES
 - BATH
 - WC
 - SHOWER
 - URINAL

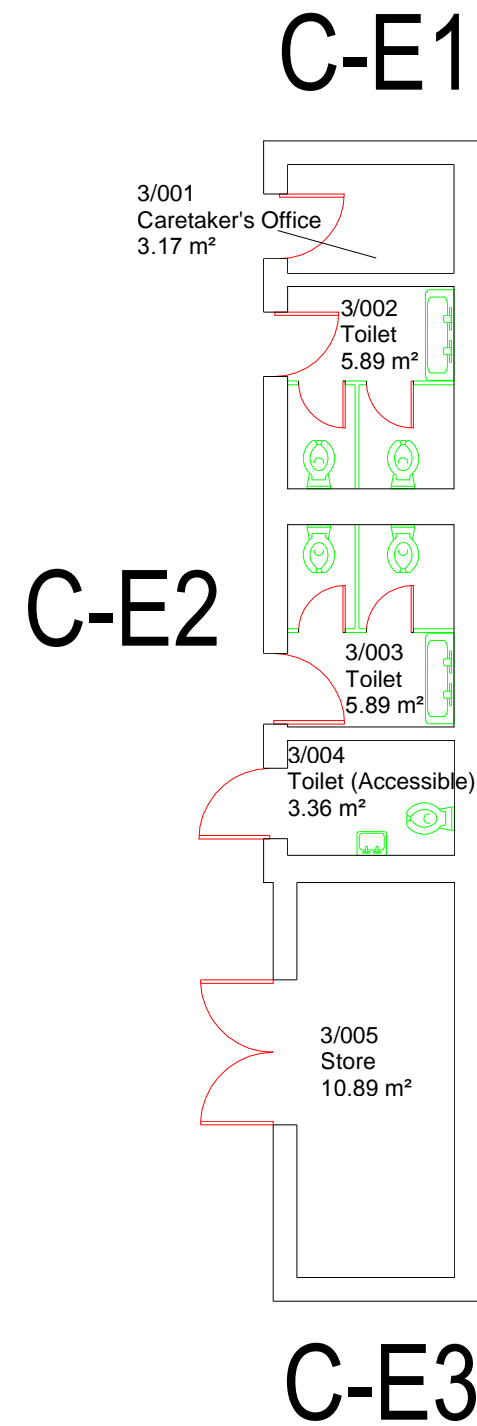


Rev.	Amendment	Date
		
Project: Measured Building Surveys		
Site: Dundonald Primary School Dundonald Road, London SW19 3QH		
Title: Floor Plan First Floor Block B		
Code: PR026-CAD00X-DNP-06		
Scale: 1-100	Date: 23/03/2015	
 www.complement-surveys.co.uk T 020 7226 6761		

Dundonald Primary School - Ground Floor

Block C

GIA: 31.7 m²



Notes:

WATER ASSETS

- EXPANSION VESSEL
- TANK
- CALORIFIER
- BOILER
- BUTLER SINK HOT AND COLD
- BUTLER SINK MIXED/COLD
- SINK HOT AND COLD
- SINK MIXED/COLD
- SPRAY SINK
- WASHING MACHINE
- DISHWASHER
- WATER COOLER
- WATER HEATER
- POINT OF USE
- HOT WATER DISPENSER/HOT DRINKS MACHINE
- WASH HAND BASIN MIXED
- WASH HAND BASIN HOT AND COLD
- WASH HAND BASIN COLD
- SHOWER HEAD
- STEAM OVEN
- DRINKING FOUNTAIN
- TAP
- THERMOSTATIC MIXING VALVES
- BATH
- SHOWER
- WC
- URINAL

Rev. Amendment Date

merton

Project: Measured Building Surveys

Site: Dundonald Primary School
Dundonald Road, London SW19 3QH

Title: Floor Plan
Ground Floor
Block C

Code: PR026-CAD00X-DNP-07

Scale: 1-100 Date: 23/03/2015

complement
consulting

www.complement-surveys.co.uk
T 020 7226 6761