

## Appendix 5 – Supporting photographs

### **Bishop Otter Campus: Design and Build Contract for design, installation and commissioning of Solar PV on roofs of Amberley, Chilgrove and Harting student residences**



Location guide (Source: <https://maps.chi.ac.uk/>)



Photo 1 – Amberley Hall (looking from the North) – corner of Chilgrove Hall is just visible to the left, Chapel is visible to the right. New Hall can be seen between Amberley and Chilgrove.





Photo 2 – Chilgrove Hall (looking from the North) - corner of Midhurst Hall is visible to the left, corner of Amberley is just visible to the right. New Hall is visible behind.





Photo 3 – Harting Hall (viewed from the South). Chilgrove Hall is also visible to the left of the footpath, with one of its wings wrapping behind Harting.





Photo 4 – Courtyard between New Hall and Amberley and Chilgrove Halls (photo taken standing outside Harting Hall and looking Northwest).





Photo 5 – Amberley Hall (with Chilgrove visible behind), looking from the West: Corner of the Chapel, scaffolded, is visible to the left. New Hall is visible to the right.





Photo 6 – Harting Hall, looking South: Laundry building is in the immediate foreground



Photo 7 – Typical loft space (Amberley Hall)





Photo 8 – Typical loft space (Amberley Hall)





Photo 9 – Typical loft space (Amberley Hall)





Photo 10 – Typical switchgear (main switch panel) for all halls – this photo is of Harting Hall





Photo 11: Standard switchgear across all halls (photo: Amberley Hall)



Photos 12: Standard switchgear across all halls (photo: Amberley Hall)



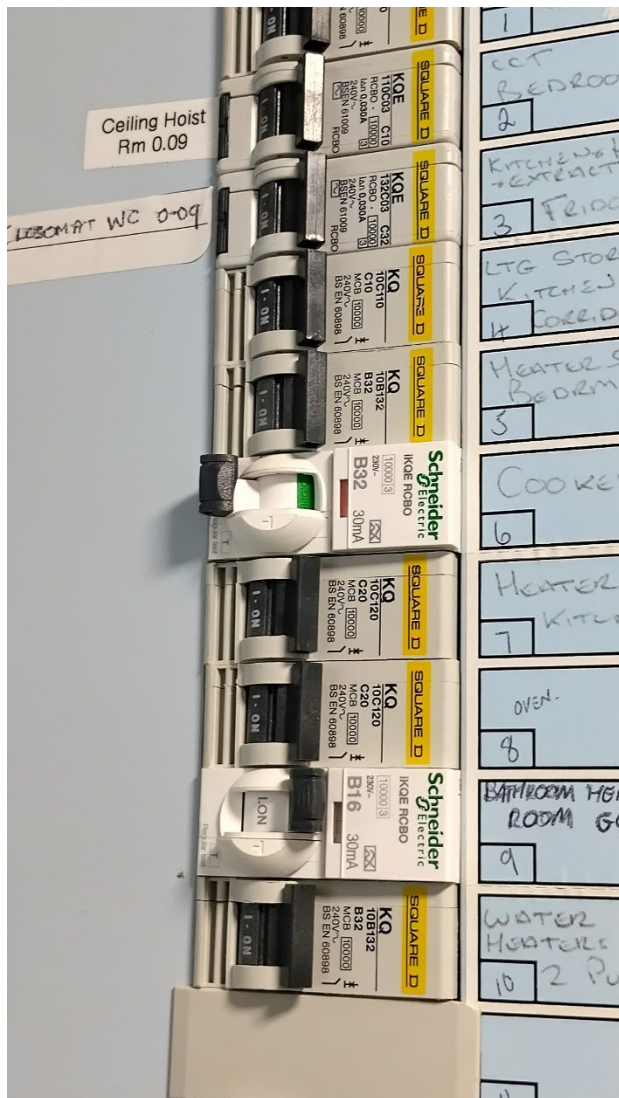


Photo 13: Use of Schneider breakers to replace discontinued Square D equipment (Amberley Hall)

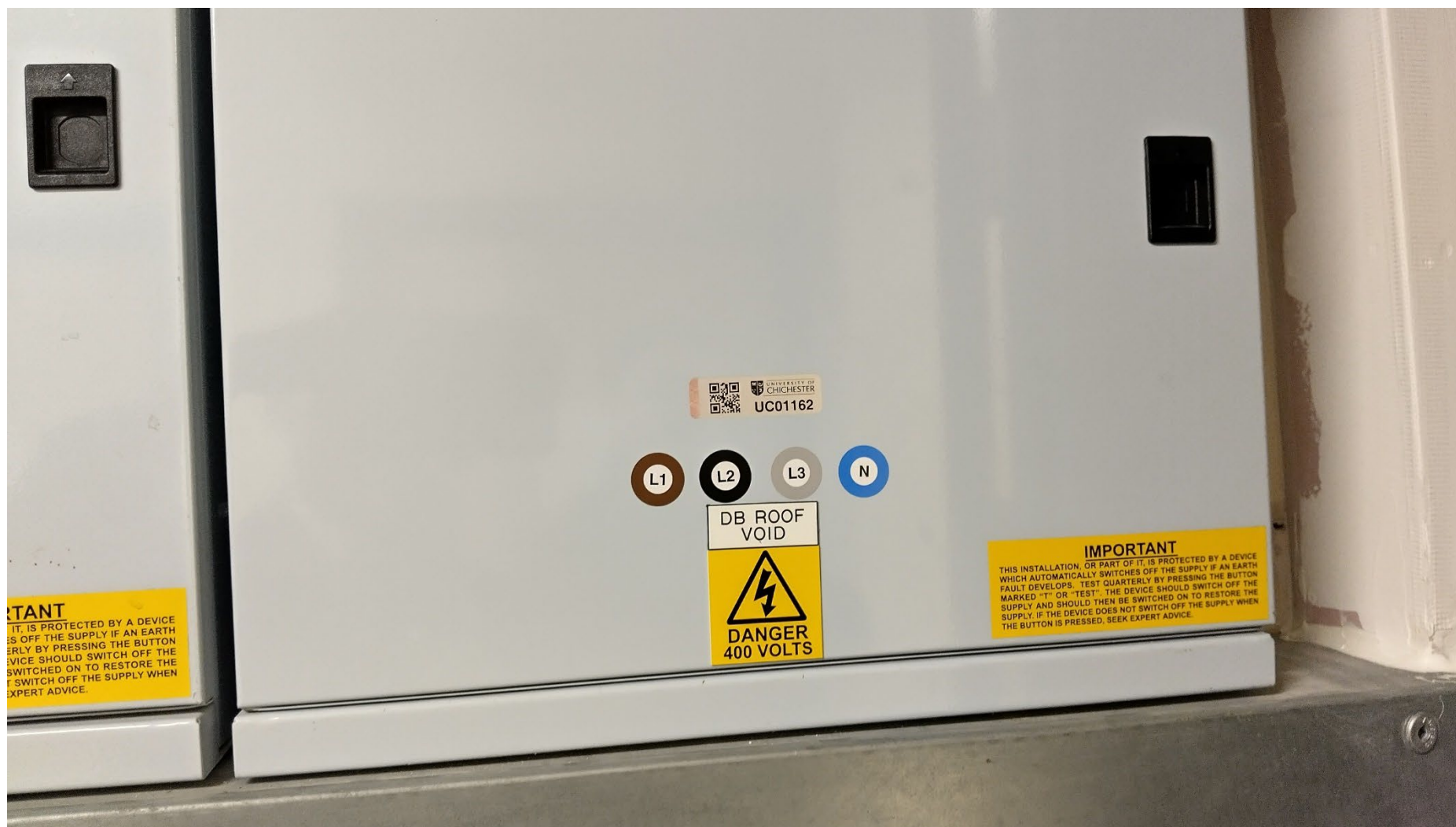


Photo 14: Currently lightly loaded "DB Roof Void" board on top floor supplying loft space (dedicated supply to this from main intake) – Amberley Hall



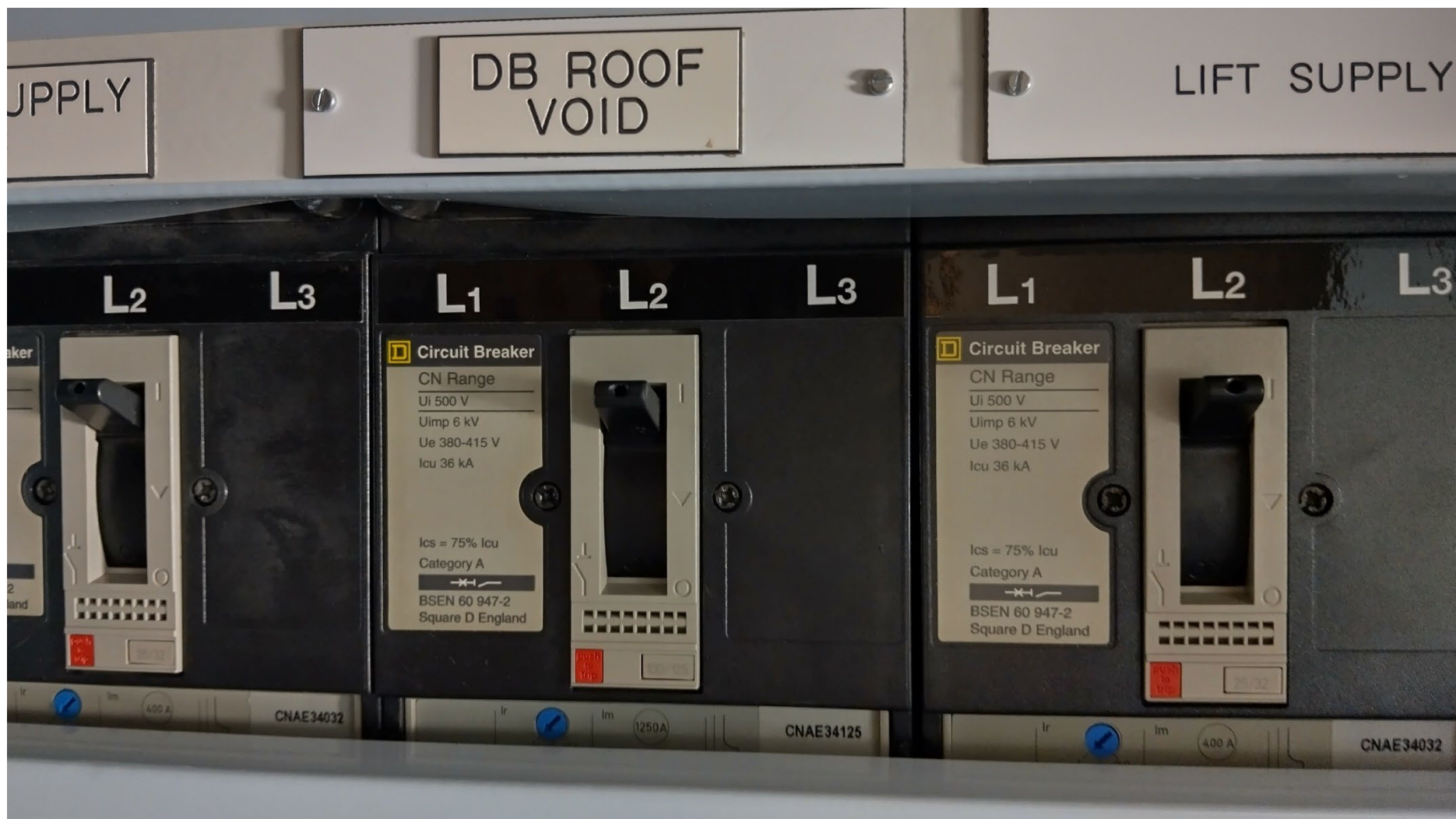


Photo 15: Breaker in main panel feeding lightly loaded “DB Roof Void” board on top floor (this photo: Chilgrove Hall)

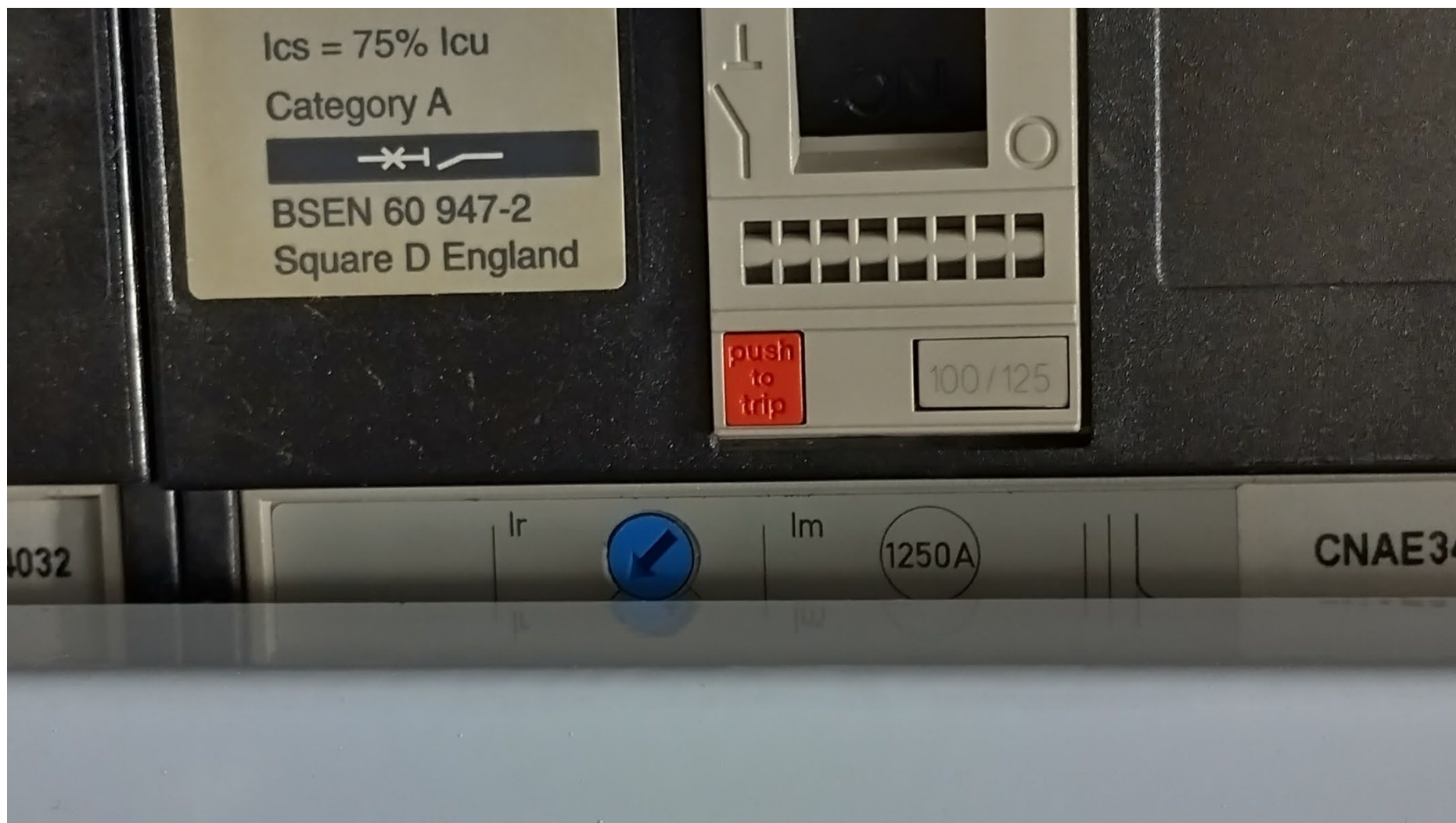


Photo 16: Detail of breaker capacity in main intake panel feeding lightly loaded “DB Roof void” board (this photo: Chilgrove Hall)