

Substructure Plan  
1 : 50

F.i. Air Bricks; For Suspended Concrete Floors, sub-floor void ventilation should be provided to whichever gives the greater opening area; 1500mm<sup>2</sup> per metre run of external wall or 500mm<sup>2</sup> per m<sup>2</sup> of floor area.

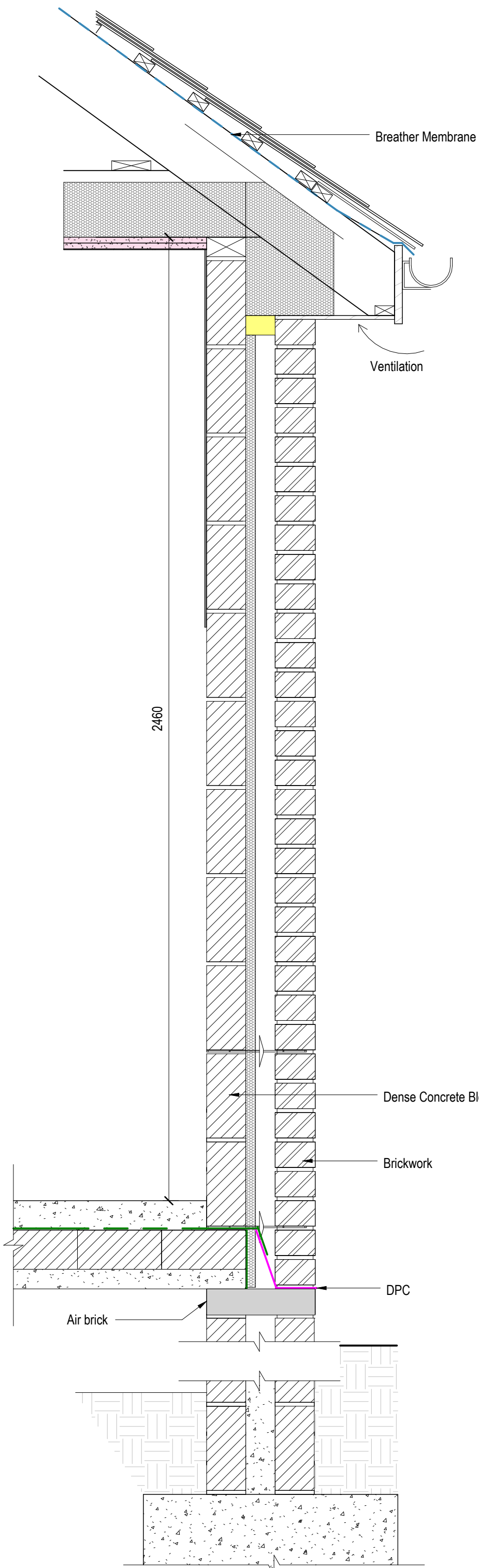
Beam and block to be to specialist design.

A.vi. Foundations; Foundation Depths to be Approved by LABC Inspector

C.i. DPC; Minimum of 150mm Above Adjacent Ground Levels

G.i. Cold Water Supply; Pipework brought up in Kitchen to stop cook under sink, with pipework in floor void insulated. All walls passing over service and drainage pipework to be supported by concrete lintels or similar approved support to walls, with sufficient gap allowed around services and drainage pipework to prevent damage due to initial settlement of the structure. Inner and outer faces of cavity walls to be masked and sealed either side of services and drainage pipework.

C.ii. DPM: Taken across entire floor and lapped to cavity tray / DPC at building perimeter. Minimum overlap of 150mm with joint taped and double sealed



Coursing  
1 : 10