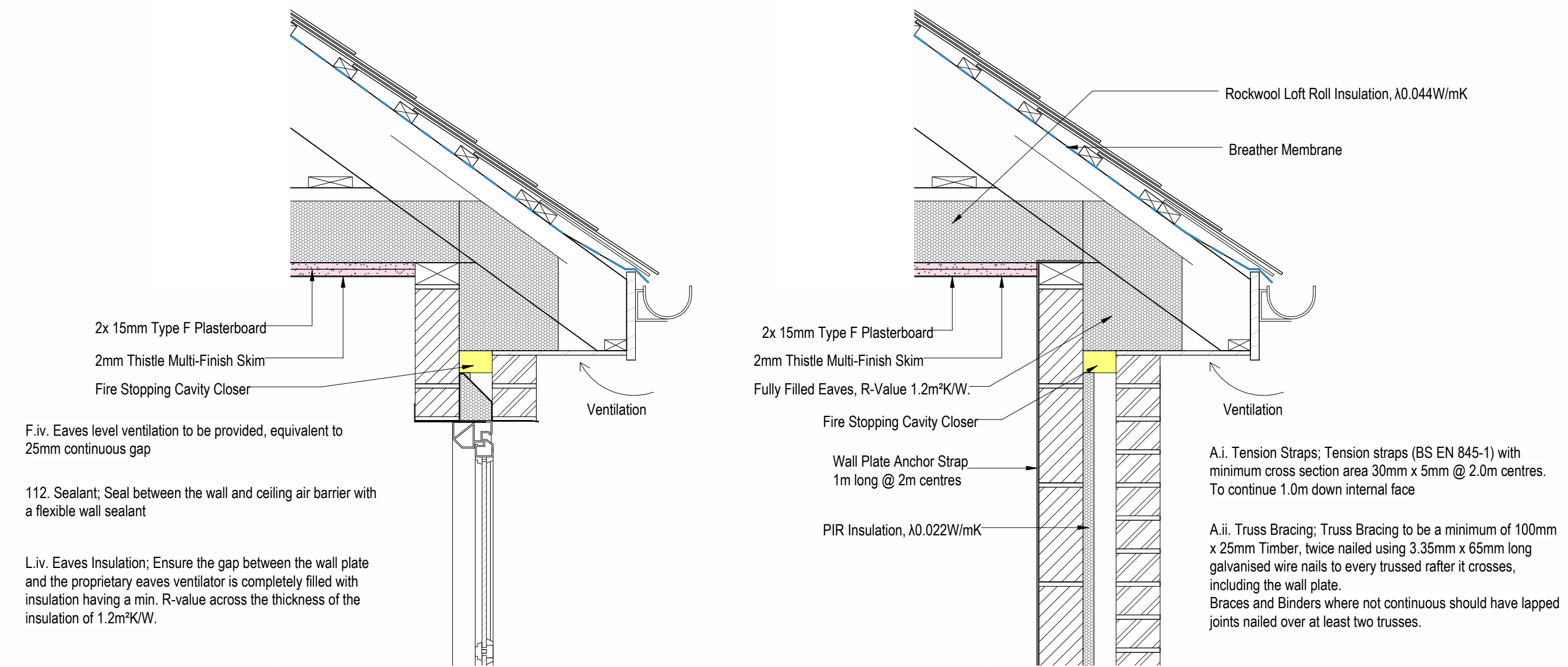
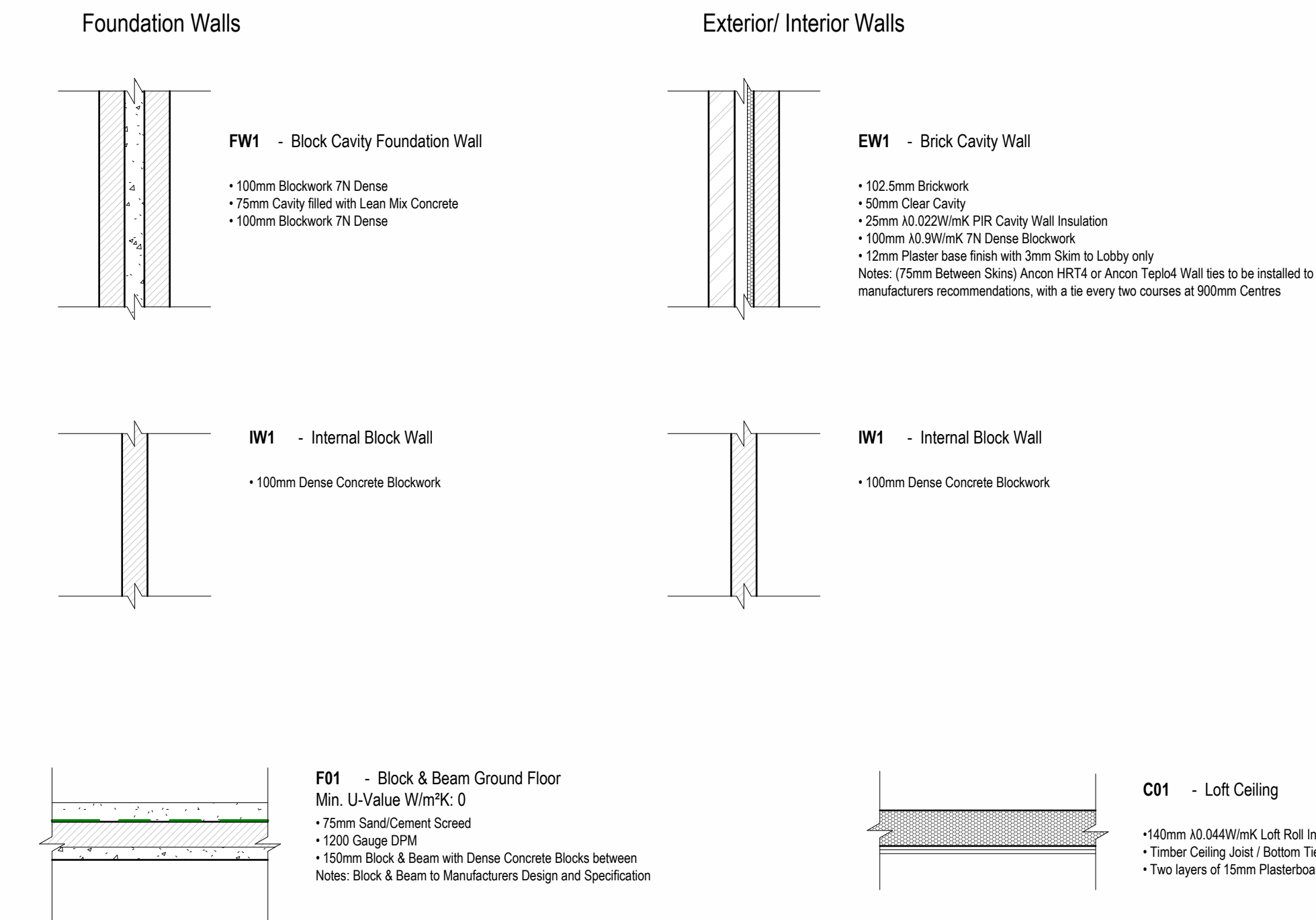


**Building Section A-A**  
1 : 50

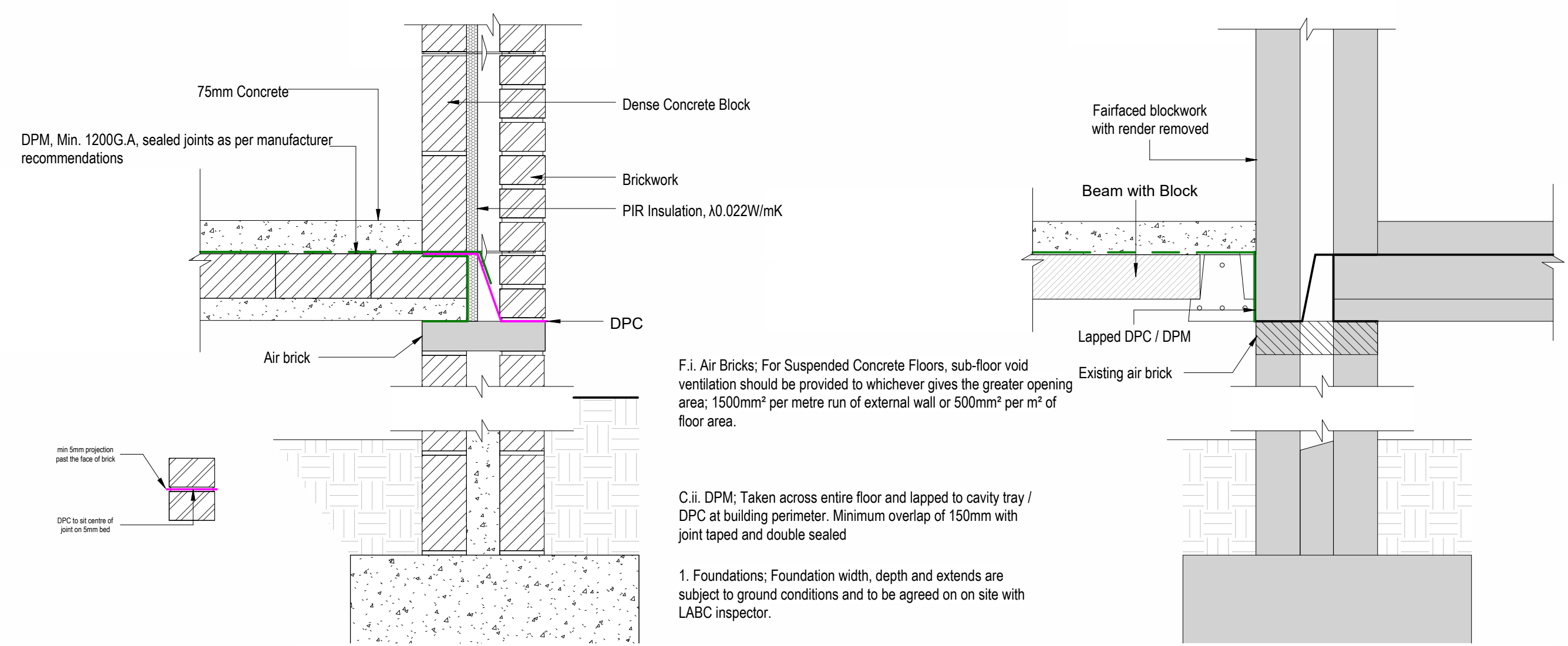


**Eaves Details**  
1 : 10



**Wall Tie Detail**  
1 : 10

**Roof Fire Stop Detail**  
1 : 10



**DPC Details**  
1 : 10

Window Schedule												
Element Type	Mark	From Room: Name	Structural Opening			Check Reveal Required	Opening Type	Finishes	Minimum U-Value (W/m²K)	Obscure Glazing	Impact Resistant Glass	Comments
			Width	Structural Width	Height							
00 Ground Floor Window	W01	Football Store	838	798	1050	Yes	Side hung	White PVCu (RAL 9016)	1.4	✓	✓	
Total: 1												

Internal Door Schedule											
Mark	To Room: Name	Structural Opening			Door Panel		Ironmongery		Locking Type	Performance Fire Rating (Type)	Comments
		Width	Height	Structural Width	Width	Height	Handle, Closing Side	Handle, Opening Side			
ID01	Football Store	910	2035 mm	838	1981	Lever Handle	Lever Handle	Mortice lock with integrated thumb turn	FD60		
Total: 1											

External Door Schedule											
Element Type	Type Mark	To Room: Name	Structural Opening			Check Reveal Required	Finishes	Safety Glass	Impact Resistant Glass	Locking Type	Door Comments
			Interior Structural Width	Exterior Structural Width	Height						
Door	ED01	Fremington Parish Store	1850	1810	2100 mm	Yes	White PVCu (RAL 9016)			Mortice lock with internal thumb turn	Capable of locking in 90 degree open position
Door	ED02	Football Store	1850	1810	2100 mm	Yes	White PVCu (RAL 9016)			Mortice lock with internal thumb turn	Capable of locking in 90 degree open position
Door	ED03	Lobby	1063	1023	2100 mm	Yes	White PVCu (RAL 9016)	✓	✓	Mortice lock with internal integrated push bar exit and traditional closer	Capable of locking in 90 degree open position
Total: 3											

Rev Description Date (Rev)

WOODWARD SMITH  
CHARTERED ARCHITECTS

www.woodward-smith.co.uk

**Proposed Queen Elizabeth II Community Pavilion**  
Tews Lane Playing Field

**Proposed Sections & Details Building Regs**

F175 24 403